

DEPARTMENT OF ENVIRONMENTAL QUALITY
AIR QUALITY DIVISION
ACTIVITY REPORT: Scheduled Inspection

D006654189

FACILITY: Quarystone, Inc. dba BICHLER Concrete & Gravel		SRN / ID: D0066
LOCATION: 6851 COUNTY 426 M.5 RD, ESCANABA		DISTRICT: Upper Peninsula
CITY: ESCANABA		COUNTY: DELTA
CONTACT: Jason Livingston , Vice President		ACTIVITY DATE: 07/08/2020
STAFF: Sydney Bruestle	COMPLIANCE STATUS: Compliance	SOURCE CLASS: MINOR
SUBJECT: Onsite Inspection to verify compliance with PTI 349-75, PTI 79-00, and all other applicable state and federal air quality regulations		
RESOLVED COMPLAINTS:		

On July 8, 2020 I (Sydney Bruestle) performed an onsite inspection at Bichler Concrete and Gravel located at 6851 County 426 M.5. Road, Escanaba, MI. While onsite I met with Jason Livingston, Vice President of Bichler Concrete and Gravel. Mr. Livingston gave me a tour of the facility and provided me with records required by Permit to Install (PTI) 349-75 and PTI 79-00.

Bichler Concrete operates a batch concrete plant and a crusher. The batch plant is covered by PTI 349-75 and the crusher is covered by PTI 77-00. The batch plant was updated with a dust collection curtain around the dispenser in 2000, the crusher was also installed in 2000. The facility fills 6-7 trucks/day and works 5 days/week. With winters off. The curtain around the concrete truck loader collects dust to be recycled back into the silo.

Below is an overview of the requirements for each PTI and some images of the equipment:

PTI 349-75

Visible emissions from the Batch concrete plant are required to be below 20%. At the time of my inspection there were no visible emissions while the plant was operating. The facility operates under a fugitive dust control plan which includes use of a water truck onsite to reduce truck traffic dust. The roads were visibly wet at the time of my inspection.

PTI 79-00

The onsite crusher uses water spray for dust suppression. The crusher was operating at the time of my inspection, below is a summary of the opacity requirements in the permit and what I observed while onsite:

Visible Emission Limits

Equipment	Opacity Limit	Opacity Observed
Any Equipment Enclosed with in a building	No Visible Emissions	NA
All Crushers	15%	0%
Screens	10%	0%
Rock Drills	5%	NA
Conveyors/Transfer Points	10%	0%
Wash Screens	No Visible Emissions	NA
All Equipment Required by NSPS to be controlled by a baghouse	7%	NA
Wheel Loaders and Truck Traffic	5%	0%

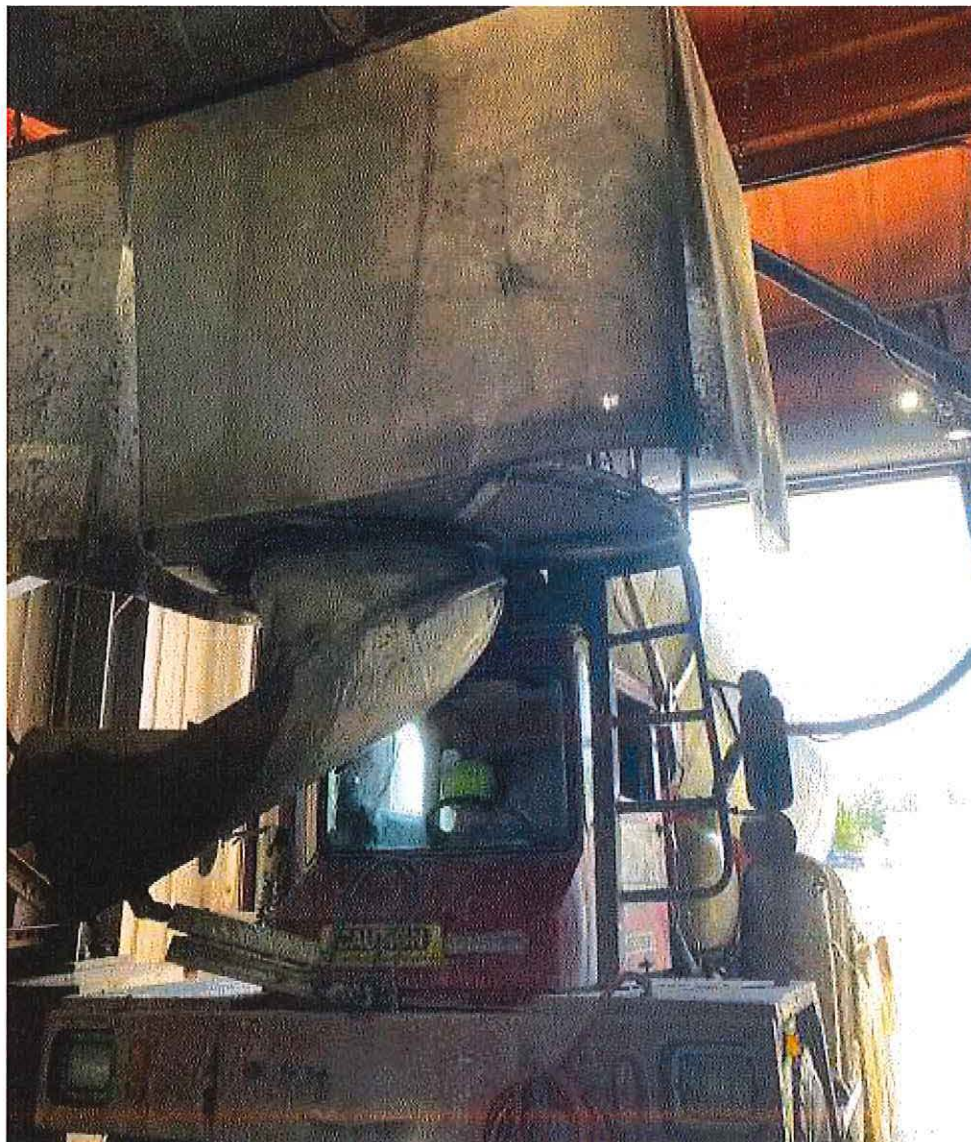
Material Storage Piles	5%	0%
Any other process equipment which is a part of the nonmetallic mineral crushing facility or related processes	10%	0%

Material Limit:

The facility is not permitted to process more than 2,000,000 tons per year. The facility processed 62,984 tons in 2019 and 60925 tons so far in 2020. The facility maintains daily records of material processed, In June 2020 the plant processed 678.64 tons/day in July 2020 the facility processed 812.01 tons.

Compliance Determination:

At the time of my inspection it appeared Bichler Concrete and Gravel was in compliance with PTI 349-75, PTI 79-00, and all applicable state and federal air quality regulations.



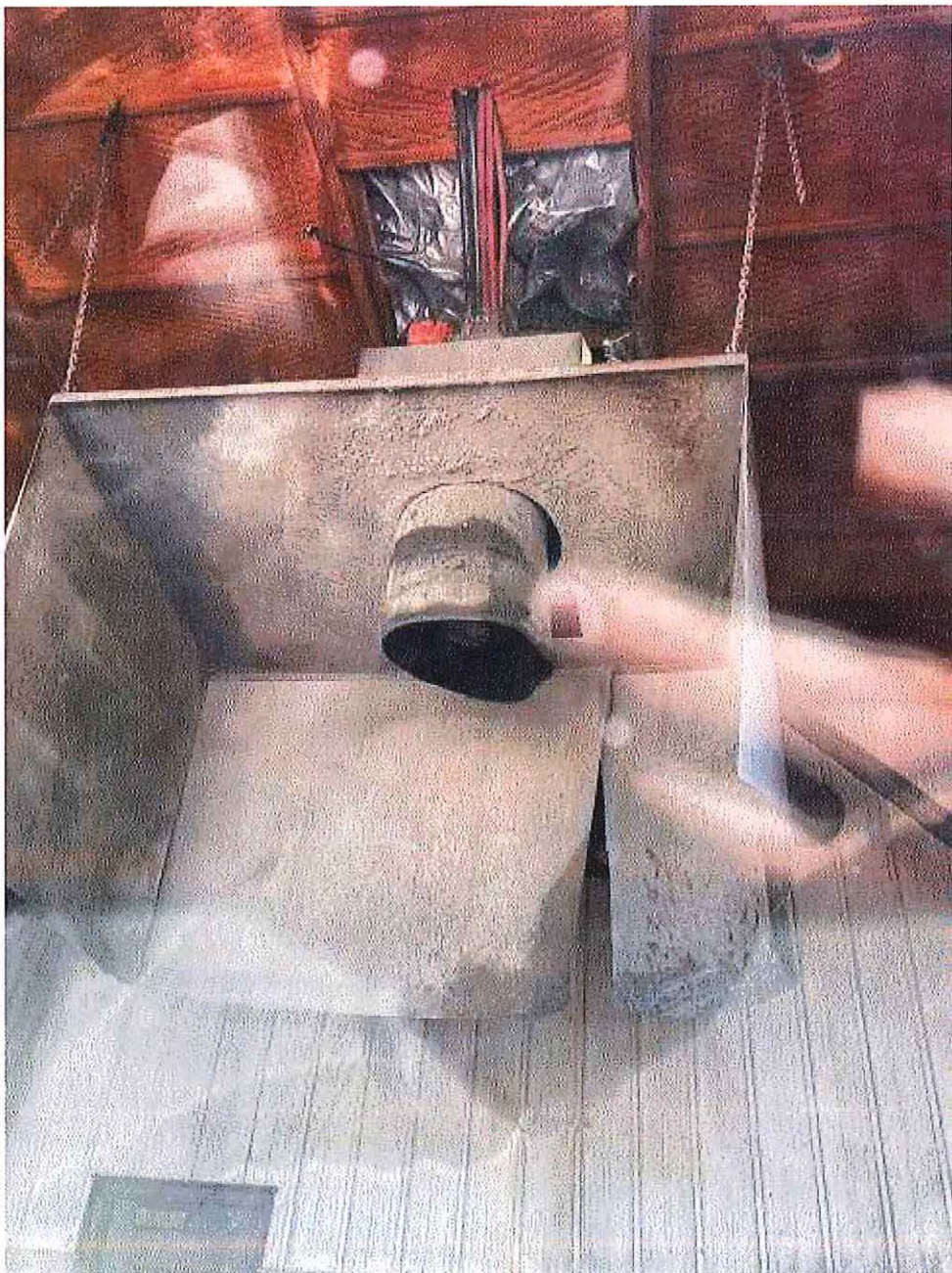
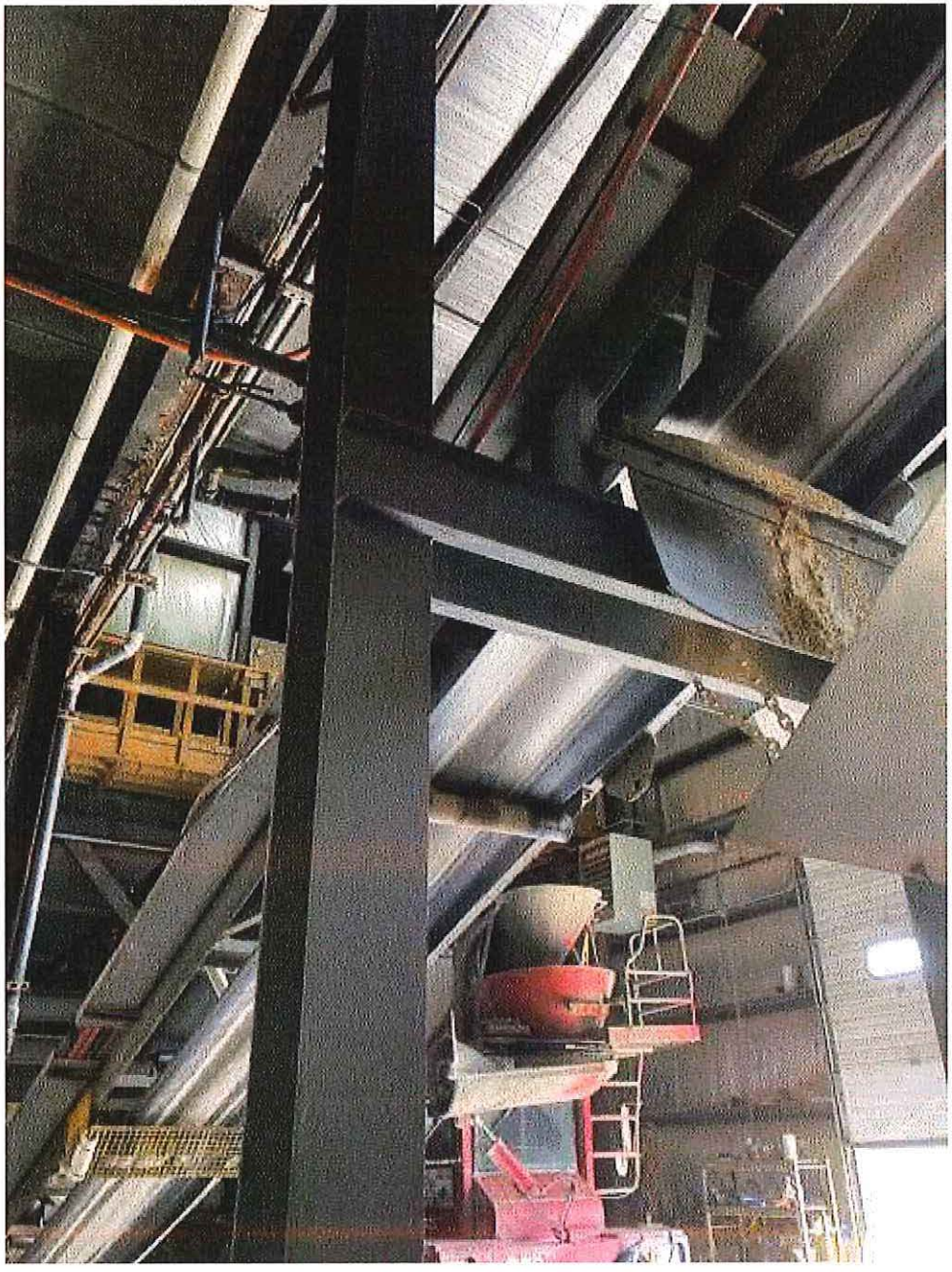




Image 3(Conveyor) : Conveyor to concrete dispenser





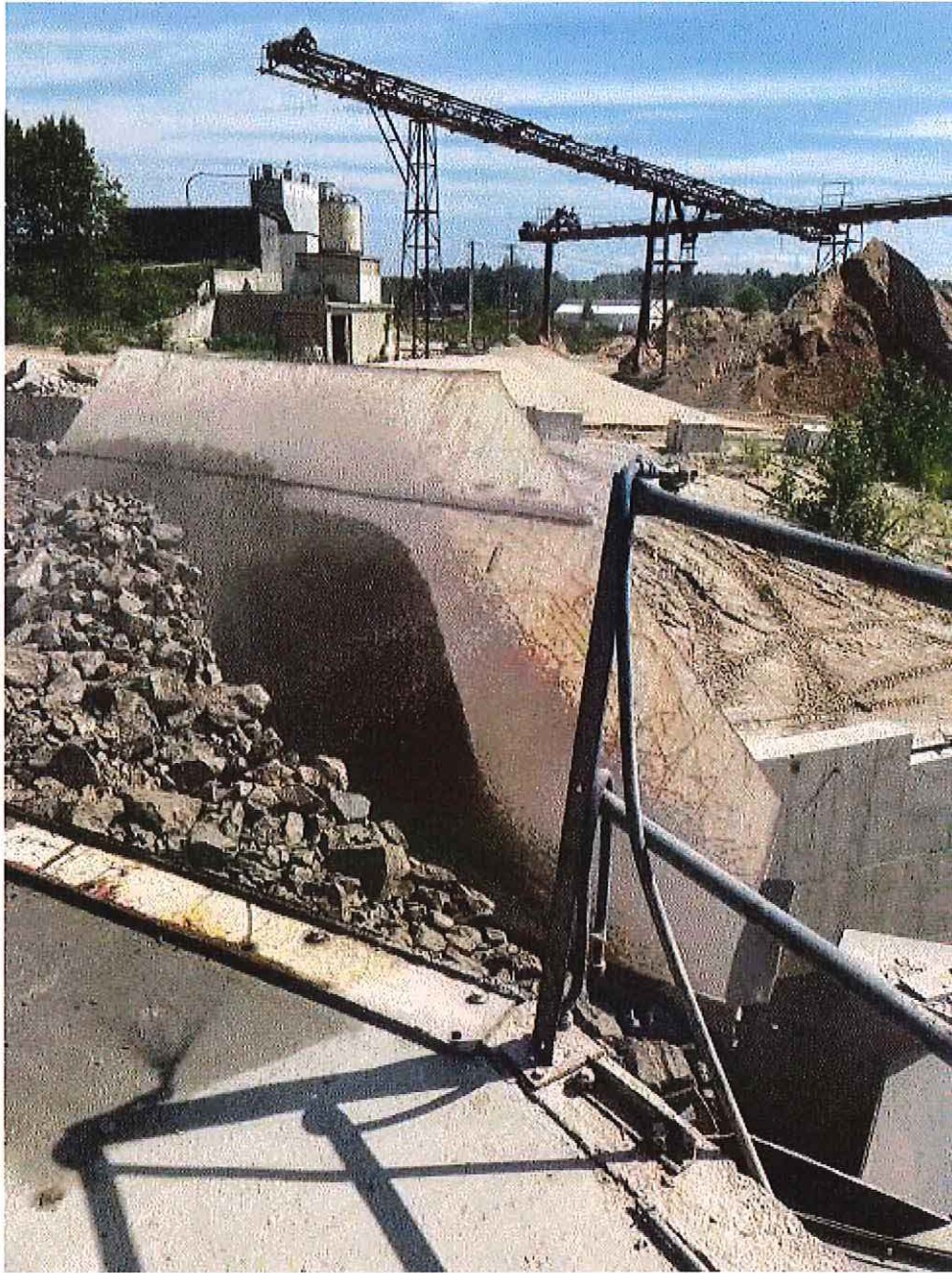


Image 5(Crusher using water) : Water spray to suppress rock dust







NAME Stephan

DATE 7/29/20

SUPERVISOR EF