

**DEPARTMENT OF ENVIRONMENTAL QUALITY  
AIR QUALITY DIVISION  
ACTIVITY REPORT: Self Initiated Inspection**

B516825963

FACILITY: WILLIAMS REDI MIX INC		SRN / ID: B5168
LOCATION: 1345 W US 2, CRYSTAL FALLS		DISTRICT: Upper Peninsula
CITY: CRYSTAL FALLS		COUNTY: IRON
CONTACT: DENNIS WILLIAMS , OWNER		ACTIVITY DATE: 07/10/2014
STAFF: Joe Scanlan	COMPLIANCE STATUS: Compliance	SOURCE CLASS: MINOR
SUBJECT: Inspection of concrete batch plant.		
RESOLVED COMPLAINTS:		

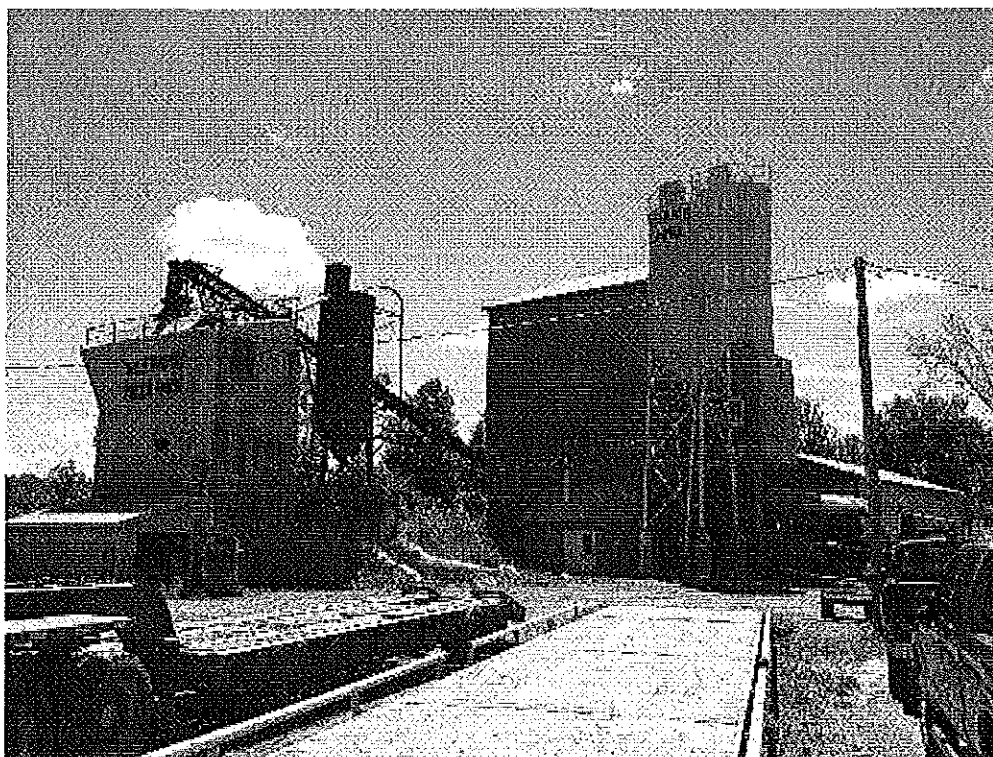
On July 10th, 2014, I conducted an unannounced inspection of the Williams Redi-Mix batch plant facility in Crystal Falls. My contact was Mr. Dennis Williams, owner and operator.

A truck had just finished loading as I approached the facility--no visible dust emissions were observed at the loading area. The ingress/egress to the facility is paved with asphalt, however there is a gravel portion of the driveway which had been sufficiently watered for dust control prior to my visit. The silo appeared to be in very good condition.

The baghouse dust collection system was replaced in 2004 with a canister system incorporating a back flow pulse for cleaning. According to Mr. Williams, the system continues to operate efficiently and relatively trouble-free. Mr. Williams demonstrated operation of the back flow pulse generator and the system performed without trouble.

Mr. Williams stated that business had been somewhat slow this year. The plant has produced approximately 2250 pounds of product to date this year. In 2013, the plant produced an annual total of about 9000 pounds, however MDOT had numerous road projects in the area which necessitated elevated production levels at that time.

I observed no violations of the Air Pollution Control Rules during this inspection.



**Image 1(wrm1)** : Currently operating batch plant on the right and decommissioned older plant on the left. Truck

scale is in the foreground. Office is out of frame on the right. Truck can be seen in the background loading.



**Image 2(wrm2) :** Gravel portion of driveway showing recent signs of watering for dust control.

NAME Joseph S. [Signature]

DATE 7/16/14

SUPERVISOR \_\_\_\_\_