

CHAPTER 14

Reports

In This Chapter:

- The Reports Menu
- Additions Report
- Removed Report
- Emission Comparison Reports
- Material/Unit Comparison Report
- Source Emission Factor Subset Report
- Summary Report



CHAPTER 14: Reports

THE REPORTS MENU

The MAERS software can generate a variety of reports to analyze your data. The reports shown on the following pages can all be accessed from the **Reports** menu item on the menu bar (Figure 14-1). Once the report is generated, you can print the report by choosing **Print** under the **File** menu bar item. This chapter provides summaries of each of the reports that can be generated in MAERS.

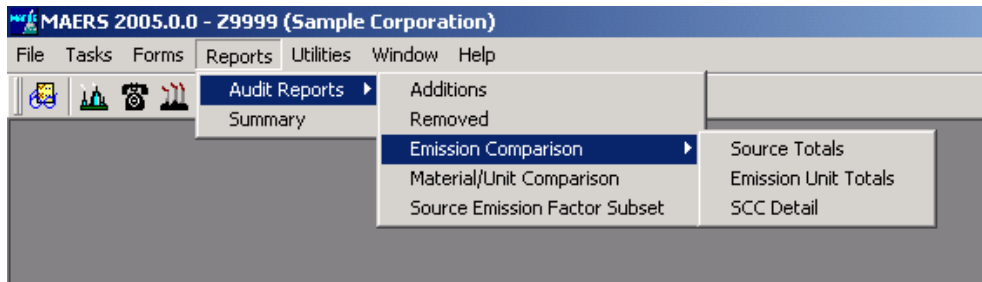


Figure 14-1: Reports Menu

ADDITIONS REPORT

The Additions Report will be displayed showing all information that has been added to MAERS for the current reporting year. For example, if you go to the SV-101 form and add a new stack, then that stack will appear on this report.

REMOVED REPORT

The MAERS software will generate a **Removed Report** showing all records that have been removed from the MAERS database. For example, if you go to the SV-101 form and change "Remove from MAERS" to "yes", then that stack will appear on the **Removed Report**. All emission units and stacks that have a "Dismantle Date" entered will also be listed on the **Removed Report**. Information that is dismantled or removed from MAERS will not appear in the company's MAERS database the following year.

EMISSION COMPARISON REPORTS

The three Emission Comparison Reports display the source-reported emissions on the left and the AQD calculated emissions on the right. The source reported emissions are emissions that have been entered on the E-101 form. The AQD calculated emissions were generated by choosing **Calculate Emissions** from the **Tasks** menu. Criteria pollutants are positioned at the top of the list and identified in red text. Non-Criteria pollutants are identified in black text and follow the Criteria pollutants on the list.

Emission Comparison - Source Totals Report

The Emission Comparison - Source Totals Report displays emissions by pollutant totaled at the source level (Figure 14-2).

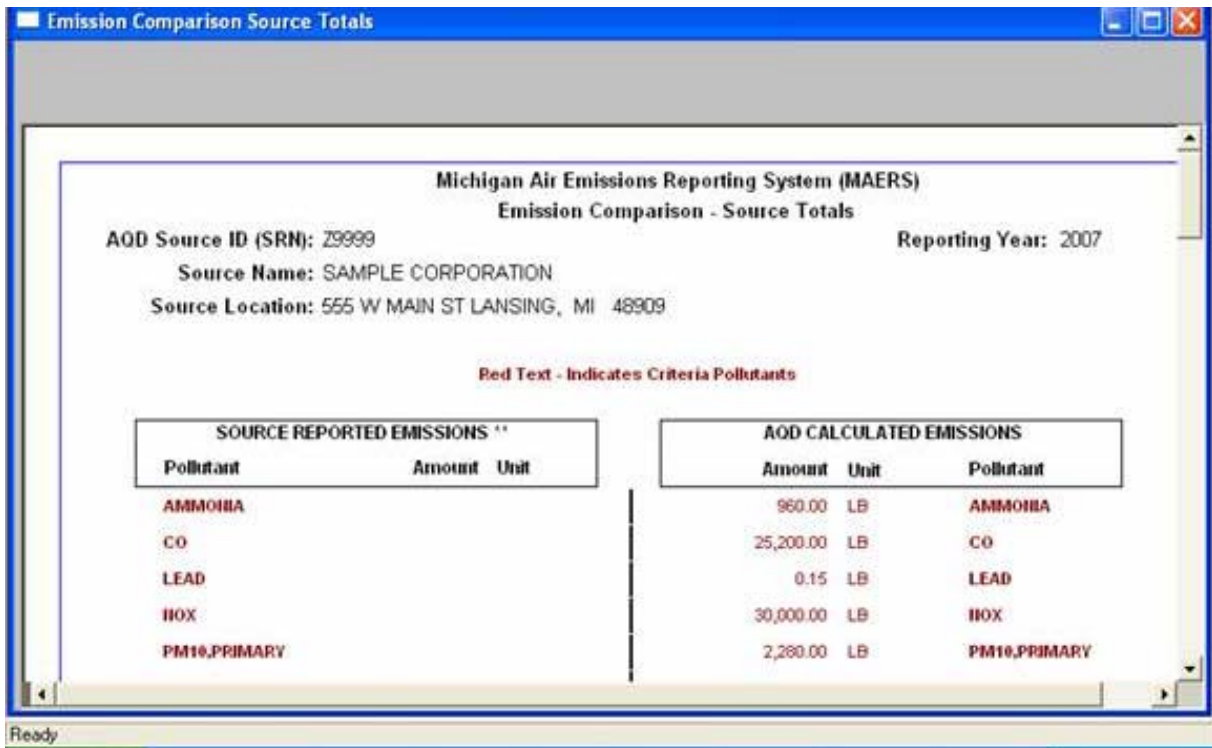


Figure 14-2: Emissions Comparison – Source Totals Report

Emission Comparison - Emission Unit Totals Report

The Emission Comparison Emission - Unit Totals Report displays emissions by pollutant, totaled at the emission unit level (Figure 14-3).

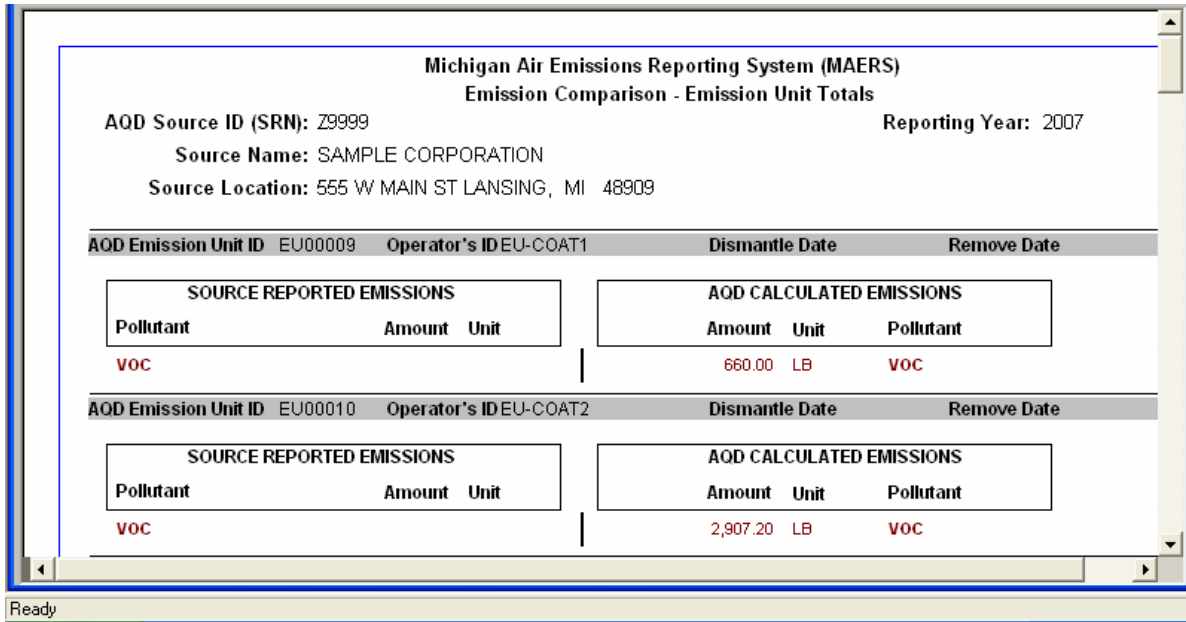


Figure 14-3: Emissions Comparison – Emission Unit Totals Report

Emission Comparison - SCC Detail Report

This Emission Comparison - SCC Detail Report displays emission information by pollutant totals at the SCC level (Figure 14-4).

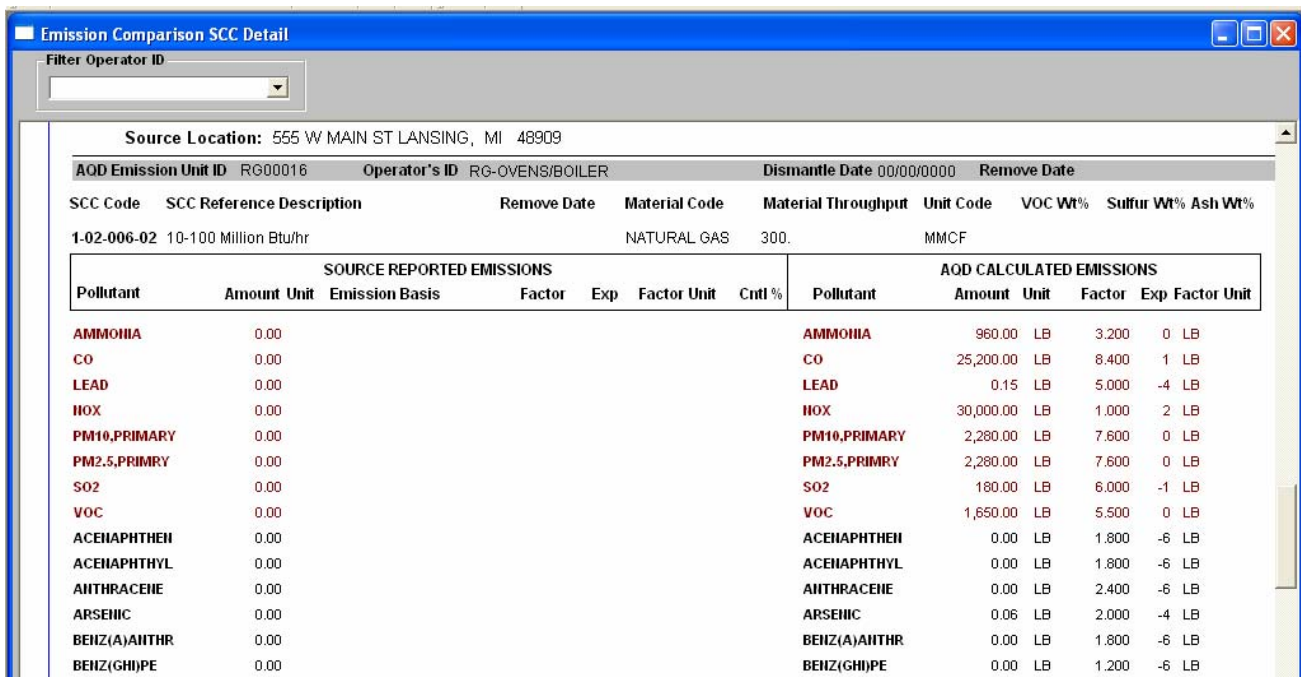


Figure 14-4: Emissions Comparison – SCC Detail Report

MATERIAL/UNIT COMPARISON REPORT

This report will list any SCC throughput material code and/or unit code that does not match the default SCC material code and unit code in the MAERS SCC reference table. All A-101 activities with an invalid material code and/or unit code will be displayed. Any material code/unit code mismatches will disable the emissions calculator.

SOURCE EMISSION FACTOR SUBSET REPORT

The Source Emission Factor Subset Report provides detailed information about the available MAERS emission factors for SCC codes used by the facility.

SUMMARY REPORT

The Source Summary report displays all of the information about the current company. Facilities may want to print a copy of this report as a copy of the MAERS information submitted to the AQD.