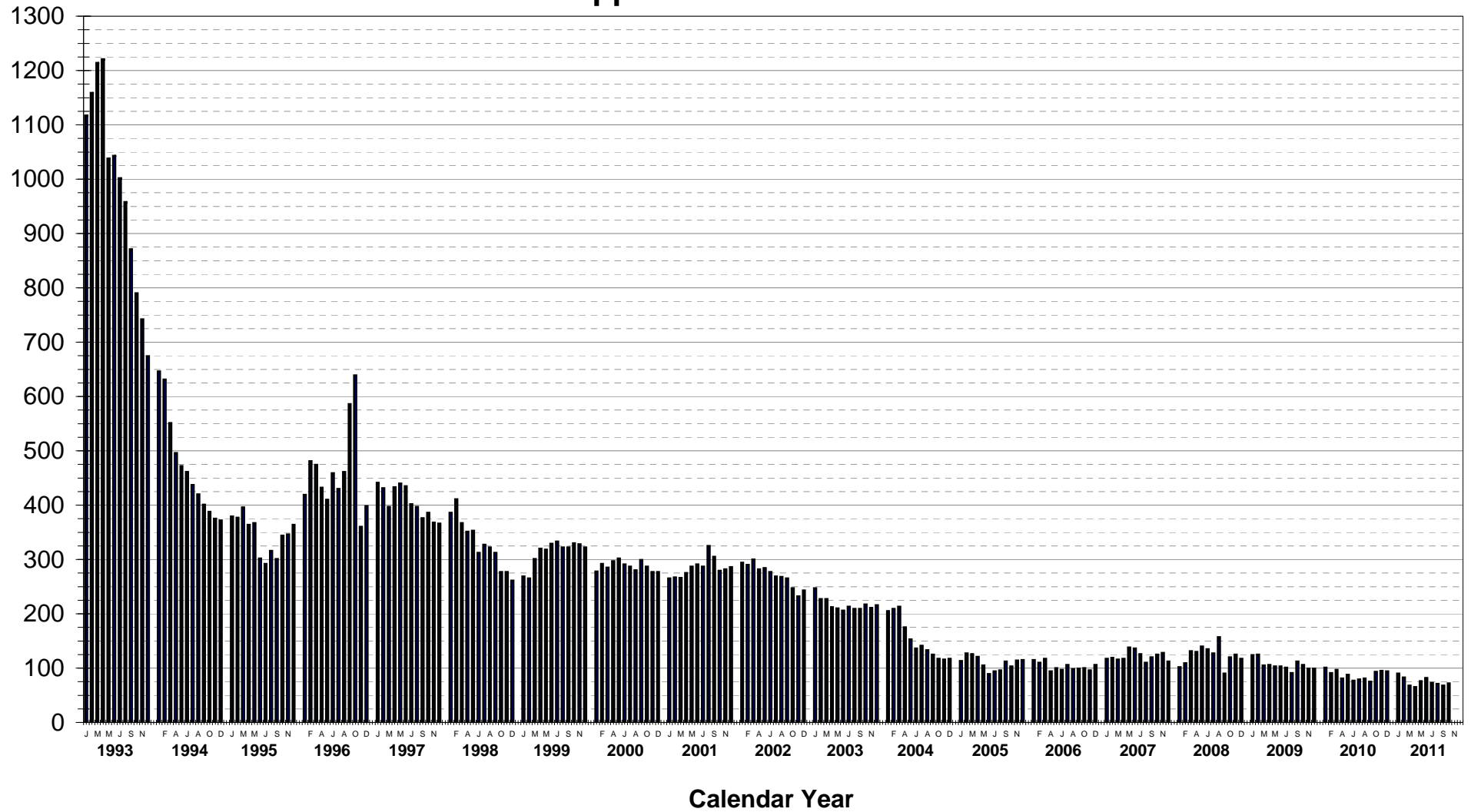
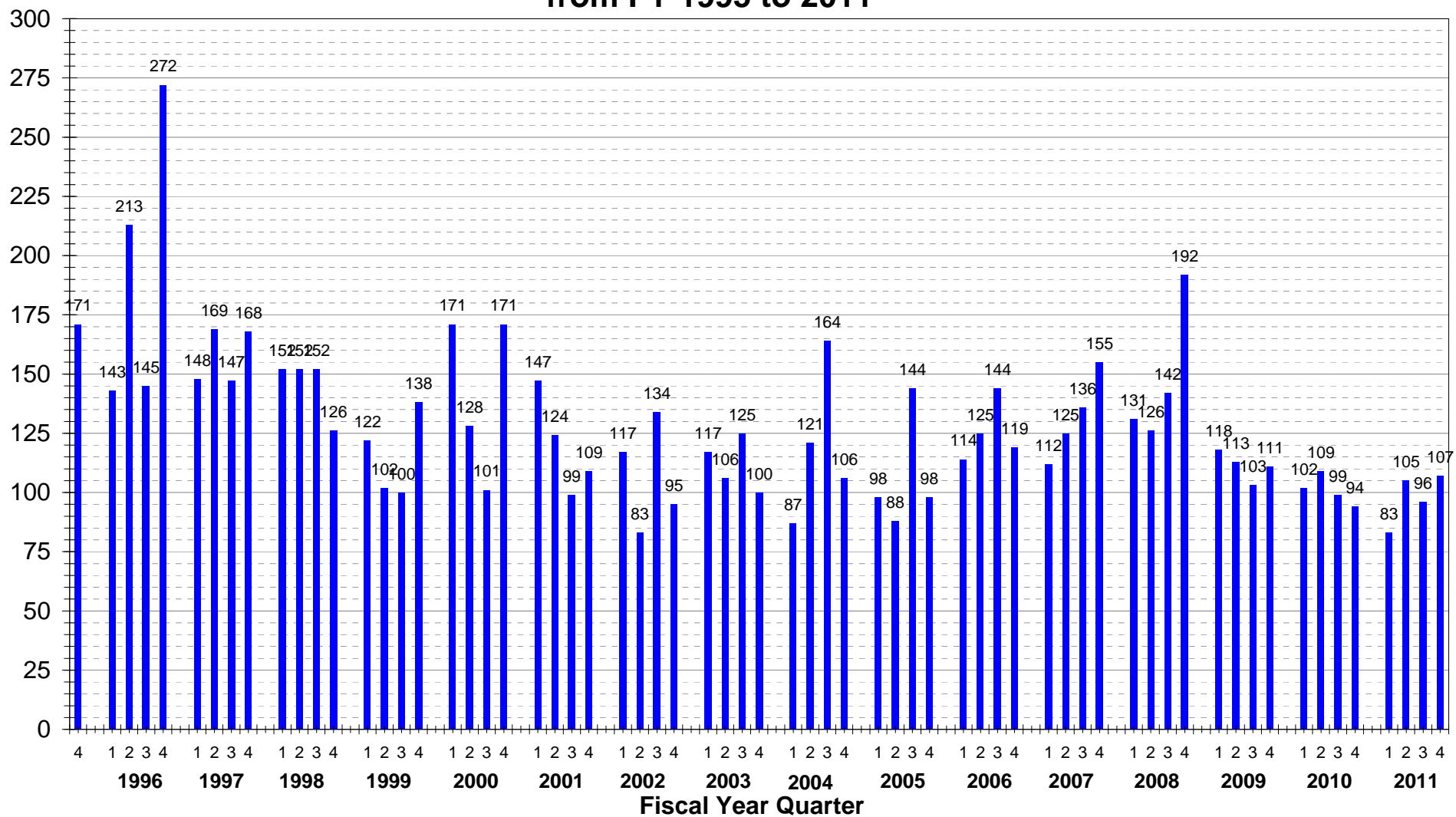


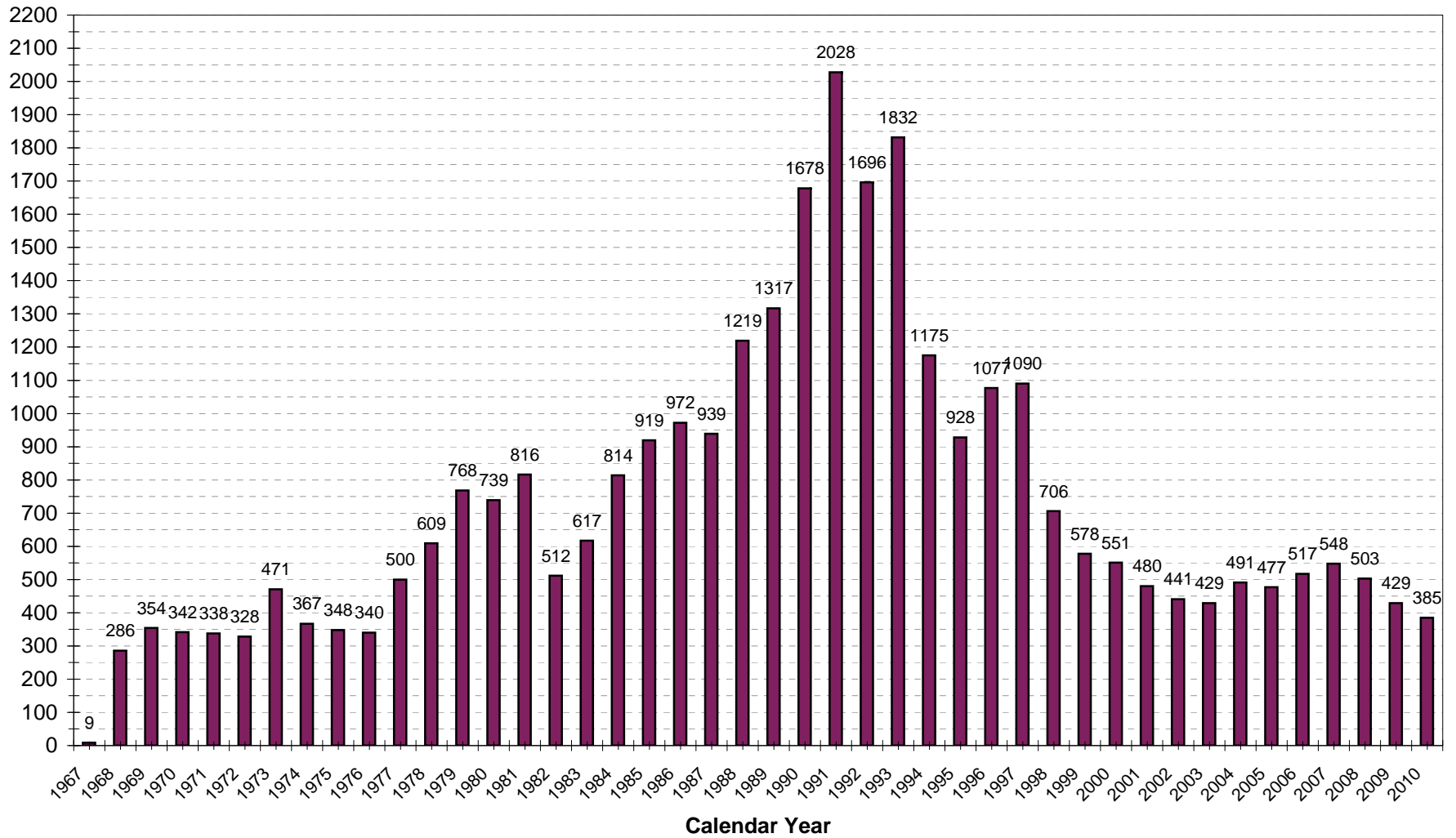
# PERMITS to INSTALL In-House Applications CY 1993 - 2011



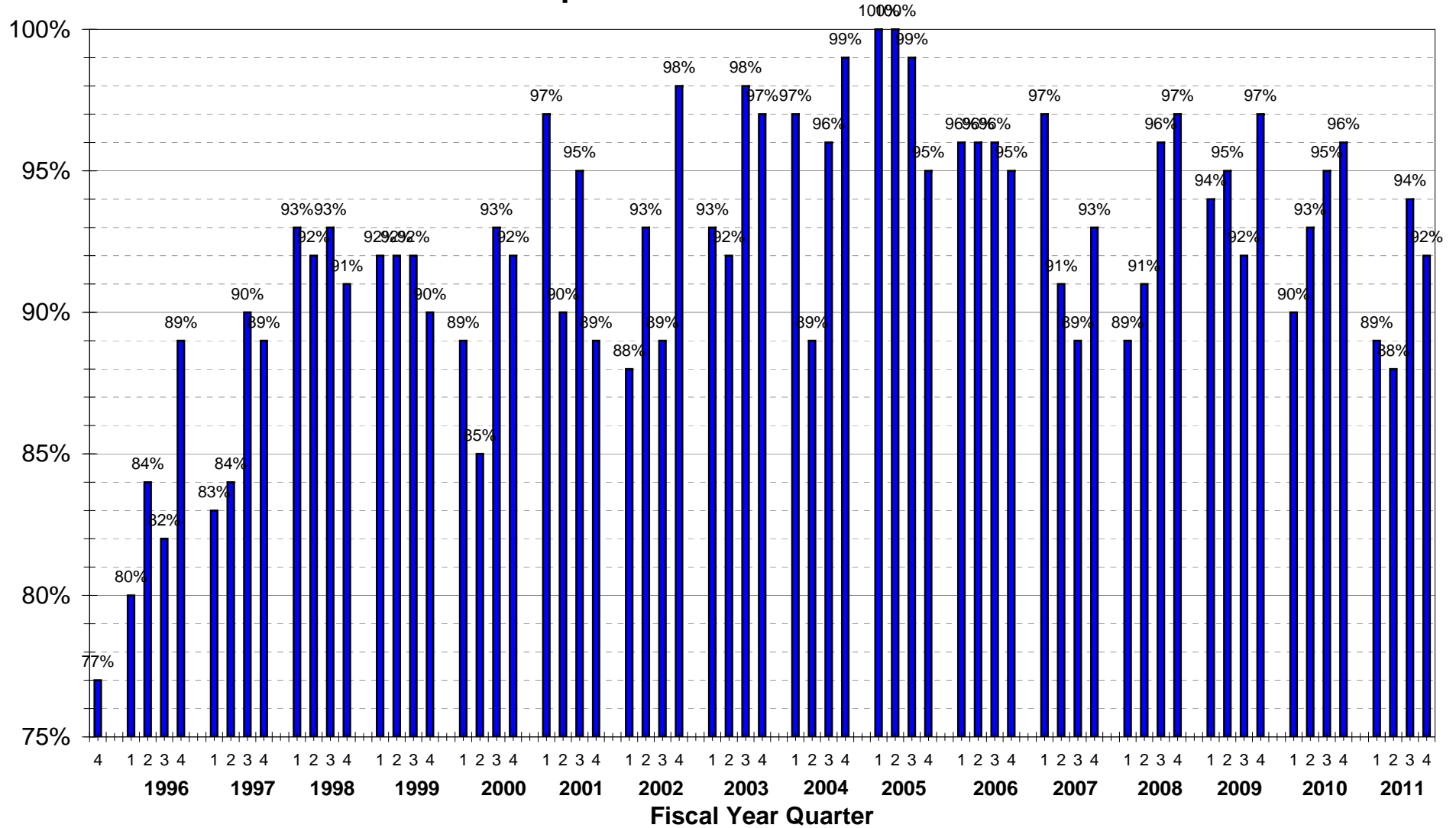
## Permits to Install Approved from FY 1995 to 2011



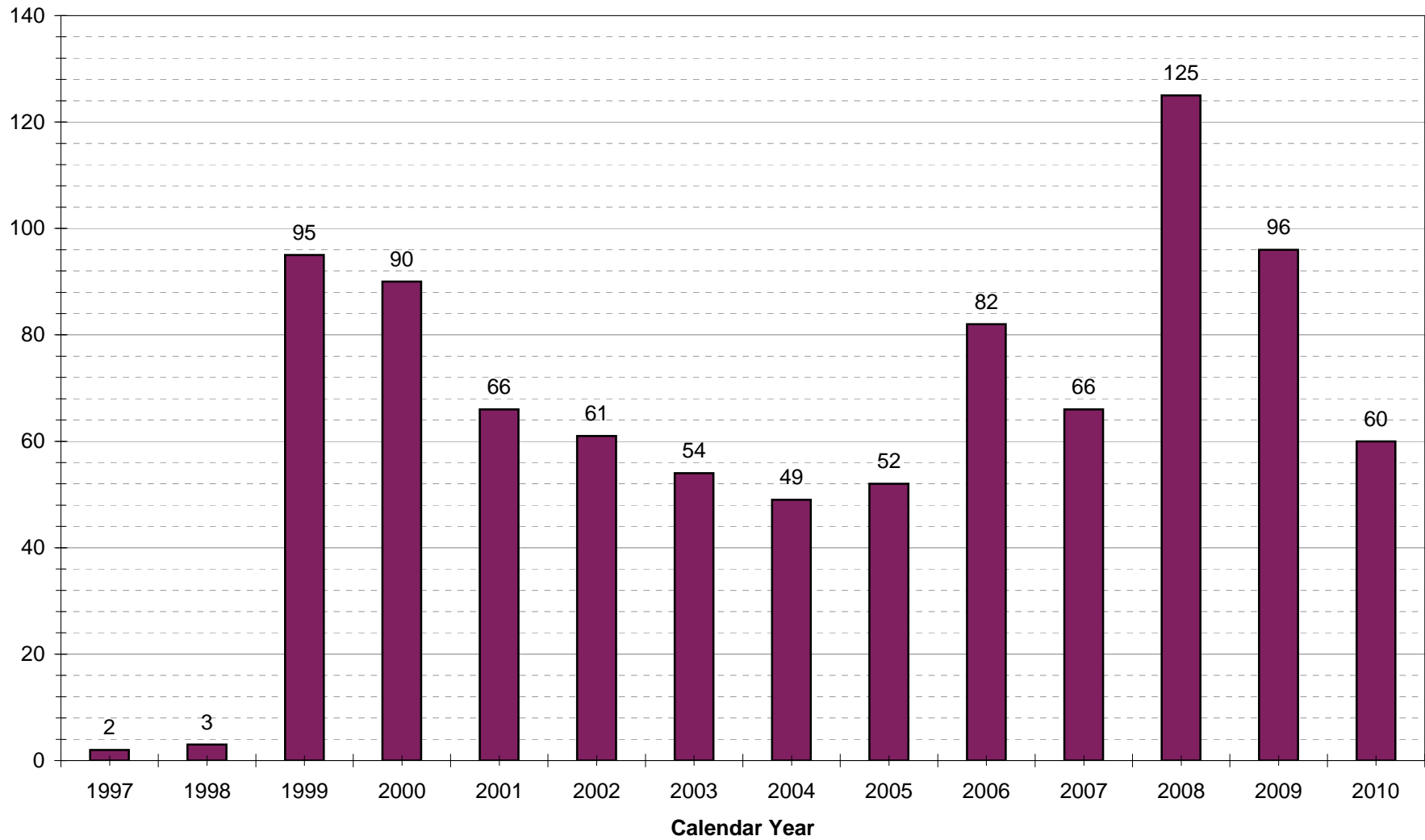
## Permits to Install Approved from CY 1967 to 2010



## Percent of Permits to Install Approved within 60/120 Days of Technical Completeness from FY 1995 to 2011



**General Permits to Install Approved  
from CY 1997 to 2010**



### Average Waiting Time for Company to Submit Info and Accept Conditions FY 1995 to 2011

