

**DEPARTMENT OF ENVIRONMENTAL QUALITY
AIR QUALITY DIVISION
ACTIVITY REPORT: On-site Inspection**

U4109059671267

FACILITY: Royal Pallets Incorporated	SRN / ID: U41090596
LOCATION: 3570 Viaduct, Grandville	DISTRICT: Grand Rapids
CITY: Grandville	COUNTY: KENT
CONTACT: Ryan Karsemeyer , Office Manager	ACTIVITY DATE: 03/27/2024
STAFF: April Lazzaro	COMPLIANCE STATUS: Compliance
SUBJECT: Unannounced, self-initiated inspection.	SOURCE CLASS:
RESOLVED COMPLAINTS:	

Air Quality Division (AQD) staff, April Lazzaro was in the area of the facility, when fugitive dust was observed coming from a process collecting wood chips in a roll off bin located outside on the northeast side.

I went into the office and met with Stacy who said that Ryan Karsenmeyer, Office Manager was unavailable, but that she would take me into the plant.

FACILITY DESCRIPTION

We observed a wood pallet refurbishing process including a wood chipper. The wood chipper was situated along the wall, and the discharge was into the roll off bin outside. The discharge chute was equipped with a fabric tube to direct the wood chips downwards, however the chute was not effective.

The facility still operates the shop heater which runs on scrap wood and is manufactured by Biomass Combustion Systems. The shop heater is exempt from Rule 201 permitting requirements pursuant to Rule 282(2) (b)(iii) exemption.

The facility conducts tear down and rebuild of pallets but does not do any heat treating of pallets on site.

I spoke with Ryan on the phone the following day to discuss the process, and AQD Rule 370 which regulates the collection and proper disposal of an air contaminant. We talked about how I observed wood chips becoming airborne, and why I stopped the day before. We discussed the company's need to address the particulate I saw coming off the chute and also the wood debris I observed in the facility parking lot that needs to be cleaned up. We also discussed enclosing the roll offs, and that's what other companies do and enclosed rolloffs are available for the wood industry.

Ryan stated that they would address my concerns immediately and get back to me with a corrective action plan. On April 1, 2024, I received the facilities corrective action plan, which had identified that the chute that delivers the wood into the roll off bin was damaged. Royal Pallets has contracted a service to make the necessary repairs which will be completed within two weeks. Royal Pallets will send an email when the repairs have been completed.

The timeframe presented by the facility is acceptable, and additional observations will be made in the future to ensure the proposed corrective action is adequate.

SUMMARY

Royal Pallets was in compliance at the time of this inspection report.

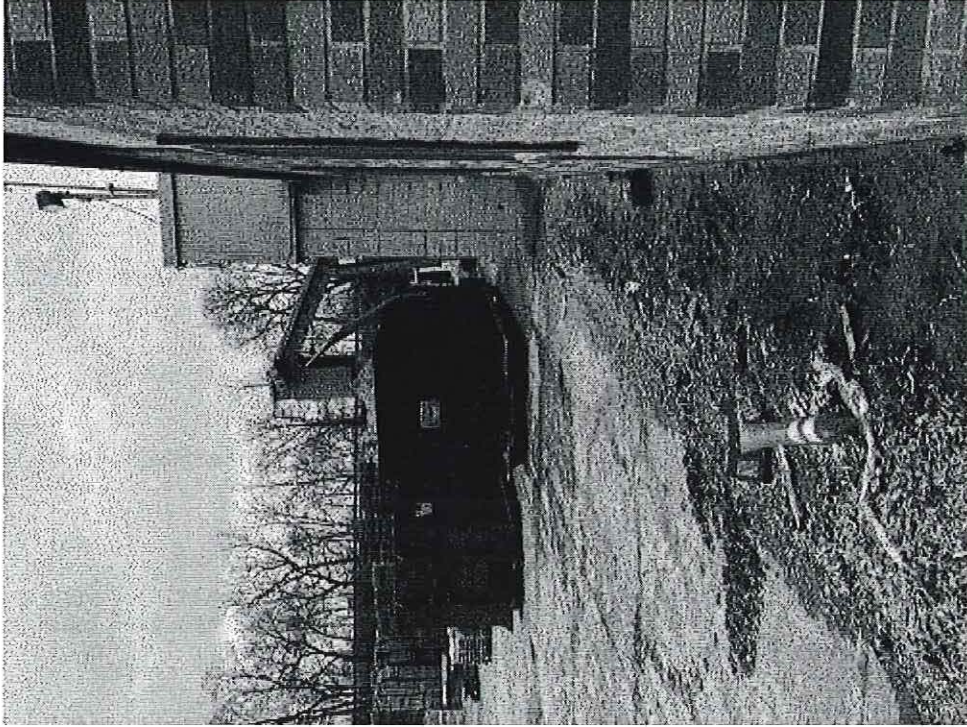


Image 1(Roll off and chute) : View image one turn clockwise. Roll off bin with chute from wood chipper, and debris in the facility parking lot.

NAME April Lazzaro

DATE 04/04/2024

SUPERVISOR 