

The logo for Consumers Energy, featuring the company name in a bold, sans-serif font. A stylized, swooping line arches over the text, starting from the left and ending on the right, partially enclosing the word "Energy".

**Consumers Energy**

*Count on Us<sup>®</sup>*

# **40 CFR Part 60 Subpart JJJJ Compliance Test Report**

**EUEMERGGEN3**

Consumers Energy Company  
Ray Compressor Station  
69333 Omo Road  
Armada, Michigan 48005  
SRN: B6636

November 1, 2023

**Test Date: September 7, 2023**

Test Performed by the Consumers Energy Company  
Regulatory Compliance Testing Section  
Air Emissions Testing Body  
Environmental and Laboratory Services Department  
Work Order No. 41145900  
Version No.: 0

# TABLE OF CONTENTS

|  |           |
|--|-----------|
| <b>EXECUTIVE SUMMARY .....</b>   | <b>IV</b> |
| <b>1.0 INTRODUCTION .....</b>  | <b>1</b>  |
| 1.1 IDENTIFICATION, LOCATION, AND DATES OF TESTS .....                             | 1         |
| 1.2 PURPOSE OF TESTING .....   | 1         |
| 1.3 BRIEF DESCRIPTION OF SOURCE .....  | 2         |
| 1.4 CONTACT INFORMATION .....  | 2         |
| <b>2.0 SUMMARY OF RESULTS .....</b>  | <b>3</b>  |
| 2.1 OPERATING DATA .....   | 3         |
| 2.2 APPLICABLE PERMIT INFORMATION .....  | 3         |
| 2.3 RESULTS .....  | 3         |
| <b>3.0 SOURCE DESCRIPTION .....</b>  | <b>4</b>  |
| 3.1 PROCESS .....  | 4         |
| 3.2 PROCESS FLOW .....   | 5         |
| 3.3 MATERIALS PROCESSED .....  | 6         |
| 3.4 RATED CAPACITY .....   | 6         |
| 3.5 PROCESS INSTRUMENTATION .....  | 7         |
| <b>4.0 SAMPLING AND ANALYTICAL PROCEDURES .....</b>                                | <b>7</b>  |
| 4.1 DESCRIPTION OF SAMPLING TRAIN AND FIELD PROCEDURES .....                       | 8         |
| 4.2 SAMPLE LOCATION AND TRAVERSE POINTS (USEPA METHOD 1) .....                     | 8         |
| 4.3 MOISTURE CONTENT (USEPA METHOD 4 / ALT-008) .....                              | 9         |
| 4.4 O <sub>2</sub> , NO <sub>x</sub> , AND CO (USEPA METHODS 3A, 7E, AND 10) ..... | 10        |
| 4.5 EMISSION RATES (USEPA METHOD 19) .....   | 12        |
| 4.6 VOLATILE ORGANIC COMPOUNDS (USEPA METHOD 25A) .....                            | 12        |
| <b>5.0 TEST RESULTS AND DISCUSSION .....</b>                                       | <b>14</b> |
| 5.1 TABULATION OF RESULTS .....  | 14        |
| 5.2 SIGNIFICANCE OF RESULTS .....  | 14        |
| 5.3 VARIATIONS FROM SAMPLING OR OPERATING CONDITIONS .....                         | 14        |
| 5.4 PROCESS OR CONTROL EQUIPMENT UPSET CONDITIONS .....                            | 14        |
| 5.5 AIR POLLUTION CONTROL DEVICE MAINTENANCE .....                                 | 14        |
| 5.6 RE-TEST DISCUSSION .....   | 14        |
| 5.7 RESULTS OF AUDIT SAMPLES .....   | 14        |
| 5.8 CALIBRATION SHEETS .....   | 15        |
| 5.9 SAMPLE CALCULATIONS .....  | 15        |
| 5.10 FIELD DATA SHEETS .....   | 16        |
| 5.11 LABORATORY QUALITY ASSURANCE / QUALITY CONTROL PROCEDURES .....               | 16        |
| 5.12 QA/QC BLANKS .....  | 16        |

## FIGURES

|  |    |
|--|----|
| FIGURE 3-1. FOUR-STROKE ENGINE PROCESS DIAGRAM.....                | 5  |
| FIGURE 3-2. RAY COMPRESSOR STATION SITE MAP .....                  | 6  |
| FIGURE 4-1. EUEMERGGEN3 SAMPLING LOCATION .....                    | 9  |
| FIGURE 4-2. ALTERNATIVE METHOD 008 MOISTURE SAMPLE APPARATUS ..... | 10 |
| FIGURE 4-3. USEPA METHODS 3A, 7E, AND 10 SAMPLING SYSTEM .....     | 11 |
| FIGURE 4-4. USEPA METHOD 19 EXHAUST FLOW RATE EQUATION 19-1 .....  | 12 |
| FIGURE 4-5. 40 CFR PART 60 SUBPART JJJJ EQUATION 1, 2, 3 .....     | 12 |
| FIGURE 4-6. USEPA METHOD 25A SAMPLE APPARATUS.....                 | 13 |

## TABLES

|   |    |
|---|----|
| TABLE E-1 SUMMARY OF TEST RESULTS.....    | IV |
| TABLE 1-1 APPLICABLE EMISSION LIMITS..... | 1  |
| TABLE 1-2 CONTACT INFORMATION.....        | 2  |
| TABLE 2-1 SUMMARY OF TEST RESULTS.....    | 3  |
| TABLE 3-1 ENGINE SPECIFICATIONS.....      | 4  |
| TABLE 4-1 TEST METHODS.....               | 7  |
| TABLE 4-2 TEST MATRIX .....               | 8  |
| TABLE 5-1 QA/QC PROCEDURES .....          | 15 |

## APPENDICES

|                  |   |
|------------------|---|
| Appendix Table 1 | EUEMERGGEN3 Emission Rates and Process Data |
| Appendix A       | Sample Calculations                         |
| Appendix B       | Field Data Sheets                           |
| Appendix C       | Operating Data                              |
| Appendix D       | Supporting Documentation                    |

## EXECUTIVE SUMMARY

Consumers Energy Regulatory Compliance Testing Section (RCTS) conducted nitrogen oxides (NO<sub>x</sub>), carbon monoxide (CO), and volatile organic compound (VOC) testing at the exhaust location of EUEMERGGEN3 installed at the Consumers Energy Ray Compressor Station in Armada, Michigan. The engine is a natural gas-fired, four-stroke lean-burn (4SLB), spark ignited (SI), reciprocating internal combustion engine (RICE), ≥130 horsepower, that powers an emergency generator to provide electricity for the site during power outages. EUEMERGGEN3 is an emissions unit identification within Michigan Department of Environment, Great Lakes, and Energy (EGLE) Renewable Operating Permit (ROP) MI-ROP-B6636-2020b and subject to federal air emissions regulations.

The test program was conducted on September 7, 2023, following the Test Protocol submitted June 6, 2023, to EGLE, to satisfy performance testing requirements and evaluate compliance with 40 CFR Part 60, Subpart JJJJ, *Standards of Performance for Stationary Spark Ignition Internal Combustion Engines*, (aka NSPS SI ICE), and the ROP. There were no deviations from the approved stack test protocol, except the proposed test date of July 11, 2023, was postponed to September 7, 2023, due to a plant shutdown.

Three, 60-minute test runs were conducted at the engine exhaust following procedures in United States Environmental Protection Agency (USEPA) Reference Methods (RM) 1, 3A, 4, 7E, 10, 19, and 25A in 40 CFR Part 60, Appendix A. During testing, EUEMERGGEN3 operated at horsepower and torque conditions within plus or minus (±) 10 percent of 100 percent peak (or the highest achievable) load, as specified in 40 CFR 60.4244(a).

The results of the EUEMERGGEN3 testing indicate the NO<sub>x</sub>, CO, and VOC emissions are compliant with applicable emissions limits and summarized in Table E-1.

**Table E-1  
Summary of Test Results**

| Parameter  | Units  | Average Result of 3 Test Runs<br>EUEMERGGEN3 | Emission Limit            |      |
|--|--|--|---------------------------|------|
|  |  |  | Subpart JJJJ <sup>1</sup> | ROP  |
| NO <sub>x</sub>  | g/HP-hr  | 0.5  | 2.0                       | 0.5  |
|  | ppmvd at 15% O <sub>2</sub>  | 36   | 160                       | -    |
| CO   | g/HP-hr  | 2.1  | 4.0                       |      |
|  | ppmvd at 15% O <sub>2</sub>  | 269  | 540                       |      |
| VOC <sup>†</sup>   | g/HP-hr  | 0.55   | 1.0                       | 0.81 |
|  | ppmvd at 15% O <sub>2</sub>  | 44   | 86                        |      |
| NO <sub>x</sub>  | nitrogen oxides  |  |                           |      |
| CO   | carbon monoxide  |  |                           |      |
| VOC  | volatile organic compounds (non-methane, non-ethane organic compounds), as propane |  |                           |      |
| g/HP-hr  | grams per horsepower hour  |  |                           |      |
| ppmvd at 15% O <sub>2</sub>  | parts per million by volume, dry basis, at 15% oxygen                              |  |                           |      |
| <sup>1</sup> Owners and operators of stationary non-certified SI engines may choose to comply with the emission standards in units of either g/HP-hr or ppmvd at 15 percent O <sub>2</sub>   |  |  |                           |      |
| <sup>†</sup> 40 CFR Part 60, Subpart JJJJ refers to volatile organic compounds as defined in 40 CFR, Part 51.100(s)(1) which defines VOC as "any compound of carbon...other than the following, which have been determined to have negligible photochemical reactivity: methane, ethane... Therefore, Subpart JJJJ exhaust gas measurements of VOC include only the total non-methane, non-ethane organic compounds. |  |  |                           |      |

Detailed results are presented in Appendix Table 1. Sample calculations and field data sheets are presented in Appendices A, and B. Engine operating data and supporting documentation are provided in Appendices C and D.

# 1.0 INTRODUCTION

This report summarizes the results of compliance air emissions testing conducted September 7, 2023, at the Consumers Energy Ray Compressor Station in Armada, Michigan. This document follows the Michigan Department of Environment, Great Lakes, and Energy (EGLE) format described in the November 2019, *Format for Submittal of Source Emission Test Plans and Reports*. Reproducing only a portion of this report may omit critical substantiating documentation or cause information to be taken out of context. If any portion of this report is reproduced, please exercise due care in this regard.

## 1.1 IDENTIFICATION, LOCATION, AND DATES OF TESTS

Consumers Energy Regulatory Compliance Testing Section (RCTS) conducted nitrogen oxides (NO<sub>x</sub>), carbon monoxide (CO), and volatile organic compound (VOC) testing of the existing stationary, spark-ignition (SI), reciprocating internal combustion engine (RICE), identified as EUEMERGEN3 installed at the Ray Compressor Station in Armada, Michigan on September 7, 2023.

A Test Protocol submitted to EGLE on June 6, 2023, was subsequently approved by Andrew Riley, Environmental Quality Analyst with ELGE, in a letter dated June 30, 2023. There were no deviations from the approved stack test protocol, except the proposed test date of July 11, 2023, was postponed to September 7, 2023, due to a plant shutdown.

## 1.2 PURPOSE OF TESTING

The test program was performed to satisfy performance testing requirements and evaluate compliance with 40 CFR Part 60, Subpart JJJJ, *Standards of Performance for Stationary Spark Ignition Internal Combustion Engines*, (aka NSPS SI ICE) and EGLE air permit MI-ROP-B6636-2020b. The applicable emission limits are presented in Table 1-1.

**Table 1-1  
Applicable Emission Limits**

| Parameter                   | Emission Limit  | Units                       | Applicable Requirement                    |
|-----------------------------|---|-----------------------------|---|
| NO <sub>x</sub>             | 0.5   | g/HP-hr                     | MI-ROP-B6636-2020b, EUEMERGEN3            |
|                             | 2.0   | g/HP-hr                     | 40 CFR Part 60, Subpart JJJJ <sup>1</sup> |
|                             | 160   | ppmvd at 15% O <sub>2</sub> | 40 CFR Part 60, Subpart JJJJ <sup>1</sup> |
| CO                          | 4.0   | g/HP-hr                     | 40 CFR Part 60, Subpart JJJJ <sup>1</sup> |
|                             | 540   | ppmvd at 15% O <sub>2</sub> | 40 CFR Part 60, Subpart JJJJ <sup>1</sup> |
| VOC <sup>†</sup>            | 0.81  | g/HP-hr                     | MI-ROP-B6636-2020b, EUEMERGEN3            |
|                             | 1.0   | g/HP-hr                     | 40 CFR Part 60, Subpart JJJJ <sup>1</sup> |
|                             | 86  | ppmvd at 15% O <sub>2</sub> | 40 CFR Part 60, Subpart JJJJ <sup>1</sup> |
| NO <sub>x</sub>             | nitrogen oxides   |                             |   |
| CO                          | carbon monoxide   |                             |   |
| VOC                         | volatile organic compounds (non-methane, non-ethane organic compounds) as propane   |                             |   |
| g/HP-hr                     | grams per horsepower hour   |                             |   |
| ppmvd at 15% O <sub>2</sub> | parts per million by volume, dry basis, at 15% oxygen   |                             |   |
| <sup>1</sup>                | Owners and operators of stationary non-certified SI engines may choose to comply with the emission standards in units of either g/HP-hr or ppmvd at 15 percent O <sub>2</sub>   |                             |   |
| <sup>†</sup>                | 40 CFR Part 60, Subpart JJJJ refers to volatile organic compounds as defined in 40 CFR, Part 51.100(s)(1) which defines VOC as "any compound of carbon...other than the following, which have been determined to have negligible photochemical reactivity: methane, ethane... Therefore, Subpart JJJJ exhaust gas measurements of VOC include only the total non-methane, non-ethane organic compounds. |                             |   |

### 1.3 BRIEF DESCRIPTION OF SOURCE

EUEMERGGEN3 is a natural gas-fired, four-stroke lean-burn (4SLB), spark ignited (SI), reciprocating internal combustion engine (RICE),  $\geq 130$  horsepower that powers an emergency electric generator to provide electricity for the site during power outages. The engine is identified as the emissions unit EUEMERGGEN3 within EGLE air permit MI-ROP-B6636-2020b.

### 1.4 CONTACT INFORMATION

Table 1-2 presents the names, addresses, and telephone numbers of the contacts for information regarding the test and the test report, and names and affiliation of personnel involved in conducting the testing.

**Table 1-2  
Contact Information**

| Program Role                     | Contact   | Address  |
|----------------------------------|---|--|
| State Regulatory Administrator   | Jeremy Howe<br>Technical Programs Unit Supervisor<br>231-878-6687<br><a href="mailto:howej@michigan.gov">howej@michigan.gov</a>                                   | Michigan Department of Environment,<br>Great Lakes and Energy<br>525 W. Allegan, Constitution Hall, 2nd Floor S<br>Lansing, Michigan 48933 |
| Regulatory Agency Representative | Andrew Riley<br>Environmental Quality Analyst<br>586-565-7379<br><a href="mailto:rileya8@michigan.gov">rileya8@michigan.gov</a>                                   | EGLE – Air Quality Division<br>Warren District SE Michigan Office<br>27700 Donald Court<br>Warren, Michigan 48092                          |
| State District Manager           | Joyce Zhu<br>Environmental Manager<br>586-606-2572<br><a href="mailto:zhuj@michigan.gov">zhuj@michigan.gov</a>  | EGLE – Air Quality Division<br>Warren District SE Michigan Office<br>27700 Donald Court<br>Warren, Michigan 48092                          |
| State Regulatory Inspector       | Noshin Khan<br>Environmental Engineer<br>586-536-1197<br><a href="mailto:khann5@michigan.gov">khann5@michigan.gov</a>   | EGLE – Air Quality Division<br>Warren District SE Michigan Office<br>27700 Donald Court<br>Warren, Michigan 48092                          |
| Responsible Official             | Avelock Robinson<br>Director of Gas Compression<br>586-716-3326<br><a href="mailto:avelock.robinson@cmsenergy.com">avelock.robinson@cmsenergy.com</a>             | Consumers Energy Company<br>St. Clair Compressor Station<br>10021 Marine City Highway<br>Ira, Michigan 48023                               |
| Corporate Air Quality Contact    | Amy Kapuga<br>Principal Environmental Engineer<br>517-788-2201<br><a href="mailto:amy.kapuga@cmsenergy.com">amy.kapuga@cmsenergy.com</a>                          | Consumers Energy Company<br>Environmental Services Department<br>1945 West Parnall Road<br>Jackson, Michigan 49201                         |
| Field Environmental Coordinator  | Thomas Fox<br>Principal Environmental Engineer<br>989-239-8457<br><a href="mailto:thomas.fox@cmsenergy.com">thomas.fox@cmsenergy.com</a>                          | Consumers Energy Company<br>Bay City Customer Service Center<br>4141 E. Wilder Road<br>Bay City, Michigan 48706                            |
| Test Facility                    | William F. Harvey<br>Supervisor Gas Compression<br>586-784-2096<br><a href="mailto:william.f.harvey@cmsenergy.com">william.f.harvey@cmsenergy.com</a>             | Consumers Energy Company<br>Ray Compressor Station<br>69333 Omo Road<br>Armada, Michigan 48005   |
| Test Team Representative         | Thomas Schmelter, QSTI<br>Sr. Engineering Technical Analyst<br>616-738-3234<br><a href="mailto:thomas.schmelter@cmsenergy.com">thomas.schmelter@cmsenergy.com</a> | Consumers Energy Company<br>17010 Crowell Road<br>JHC Training Center / 149-10<br>West Olive Michigan 49460                                |

## 2.0 SUMMARY OF RESULTS

### 2.1 OPERATING DATA

During the compliance test, the engine fired natural gas and pursuant to §60.4244(a), the engine was operated at the highest achievable load. The performance testing was conducted with the engine operating at an average load of 93% torque and 93% horsepower, based on the maximum manufacturer's design capacity. Refer to Appendix C for detailed operating data from the facility's data acquisition system.

### 2.2 APPLICABLE PERMIT INFORMATION

The Ray Compressor Station operates in accordance with MI-ROP-B6636-2020b. EUEMERGGEN3 is the emission unit source identified in the permit. Incorporated within the permit are the applicable federal requirements of 40 CFR Part 60, Subpart JJJJ.

### 2.3 RESULTS

The results of the EUEMERGGEN3 testing indicate the NO<sub>x</sub>, CO, and VOC emissions are compliant with applicable emissions limits. Refer to Table 2-1 for a summary of the test results.

**Table 2-1  
Summary of Test Results**

| Parameter  | Units  | Average Result of<br>3 Test Runs<br>EUEMERGGEN3 | Emission Limit            |      |
|--|--|---|---------------------------|------|
|  |  |   | Subpart JJJJ <sup>1</sup> | ROP  |
| NO <sub>x</sub>  | g/HP-hr  | 0.5   | 2.0                       | 0.5  |
|  | ppmvd at 15% O <sub>2</sub>  | 36  | 160                       | NA   |
| CO   | g/HP-hr  | 2.1   | 4.0                       | NA   |
|  | ppmvd at 15% O <sub>2</sub>  | 269   | 540                       | NA   |
| VOC <sup>†</sup>   | g/HP-hr  | 0.55  | 1.0                       | 0.81 |
|  | ppmvd at 15% O <sub>2</sub>  | 44  | 86                        | NA   |
| NO <sub>x</sub>  | nitrogen oxides  |   |                           |      |
| CO   | carbon monoxide  |   |                           |      |
| VOC  | volatile organic compounds (non-methane, non-ethane organic compounds), as propane |   |                           |      |
| g/HP-hr  | grams per horsepower hour  |   |                           |      |
| ppmvd at 15% O <sub>2</sub>  | parts per million by volume, dry basis, at 15% oxygen                              |   |                           |      |
| <sup>1</sup> Owners and operators of stationary non-certified SI engines may choose to comply with the emission standards in units of either g/HP-hr or ppmvd at 15 percent O <sub>2</sub>   |  |   |                           |      |
| <sup>†</sup> 40 CFR Part 60, Subpart JJJJ refers to volatile organic compounds as defined in 40 CFR, Part 51.100(s)(1) which defines VOC as "any compound of carbon...other than the following, which have been determined to have negligible photochemical reactivity: methane, ethane... Therefore, Subpart JJJJ exhaust gas measurements of VOC include only the total non-methane, non-ethane organic compounds. |  |   |                           |      |

Detailed results are found in Appendix Table 1. A discussion of the results is presented in Section 5.0. Sample calculations and field data sheets are provided in Appendices A and B. Engine operating data and supporting documentation are provided in Appendices C and D.

## 3.0 SOURCE DESCRIPTION

EUEMERGGEN3 is operated as an emergency SI ICE in the event of a site power outage. A summary of the engine specifications from the manufacturer's gas engine site-specific technical data is presented in Table 3-1.

**Table 3-1  
Engine Specifications**

| Parameter <sup>1</sup>  | EUEMERGGEN3      |
|---|------------------|
| Manufactured Date   | November 8, 2011 |
| Make  | Caterpillar      |
| Model   | G3516B           |
| Serial No.  | ZBC00239         |
| Output (brake-horsepower)   | 1,818            |
| Heat Input (mmBtu/hr)   | 12.25            |
| Exhaust Gas Temp. (°F)  | 974              |
| Engine Outlet O <sub>2</sub> (Vol-%, dry)   | 9.3              |
| <sup>1</sup> Engine specifications are based upon vendor data for operation at 100% of rated engine capacity. |                  |

### 3.1 PROCESS

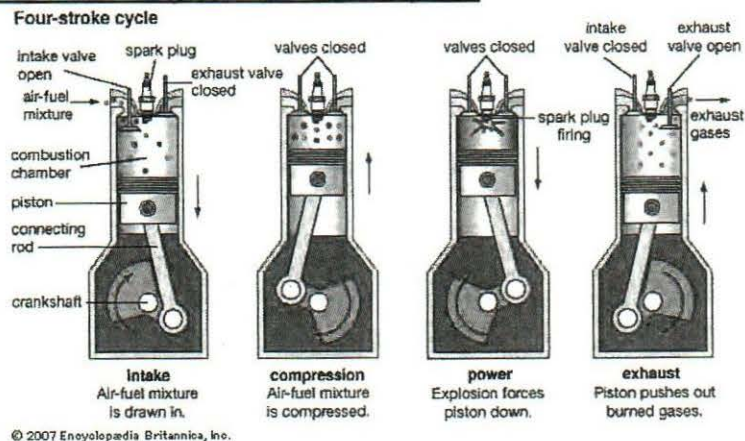
The Ray Compressor Station is a natural gas transmission and storage facility. The facility operates EUEMERGGEN3 to turn an emergency generator that provides electricity during power outages.

EUEMERGGEN3 is a natural gas-fired 4SLB SI RICE manufactured on November 8, 2011. In a four-stroke engine, air is aspirated into the cylinder during the downward travel of the piston on the intake stroke. Fuel is injected when the piston is near the bottom of the intake stroke; the intake ports close as the piston moves to the top of the cylinder, compressing the air/fuel mixture. The spark ignition and combustion of the air/fuel charge begins the downward movement of the piston called the power stroke. As the piston reaches the bottom of the power stroke, valves open and combustion products are expelled from the cylinder as the piston travels upward. A new air-to-fuel charge is injected as the piston moves downward with a new intake stroke.

The engine provides mechanical shaft power to an electricity-producing generator. Refer to Figure 3-1 for a four-stroke engine process diagram.



**Figure 3-1. Four-Stroke Engine Process Diagram**



The natural gas-fired engine is controlled through parametric controls (i.e., timing and air-to-fuel ratio), and lean burn combustion technology to limit air emissions. The Caterpillar engine includes an Advanced Digital Engine Management (ADEM) electronic control system. The ADEM electronic controls integrate governing (engine sensing and monitoring, air/fuel ratio control, ignition timing, and detonation control) into one comprehensive engine control system for optimum performance and reliability.

The NO<sub>x</sub> emissions are minimized using lean-burn combustion technology. Lean-burn combustion refers to a high level of excess air (generally 50% to 100% relative to the stoichiometric amount) in the combustion chamber. The excess air absorbs heat during the combustion process, thereby reducing the combustion temperature and pressure and resulting in lower NO<sub>x</sub> emissions.

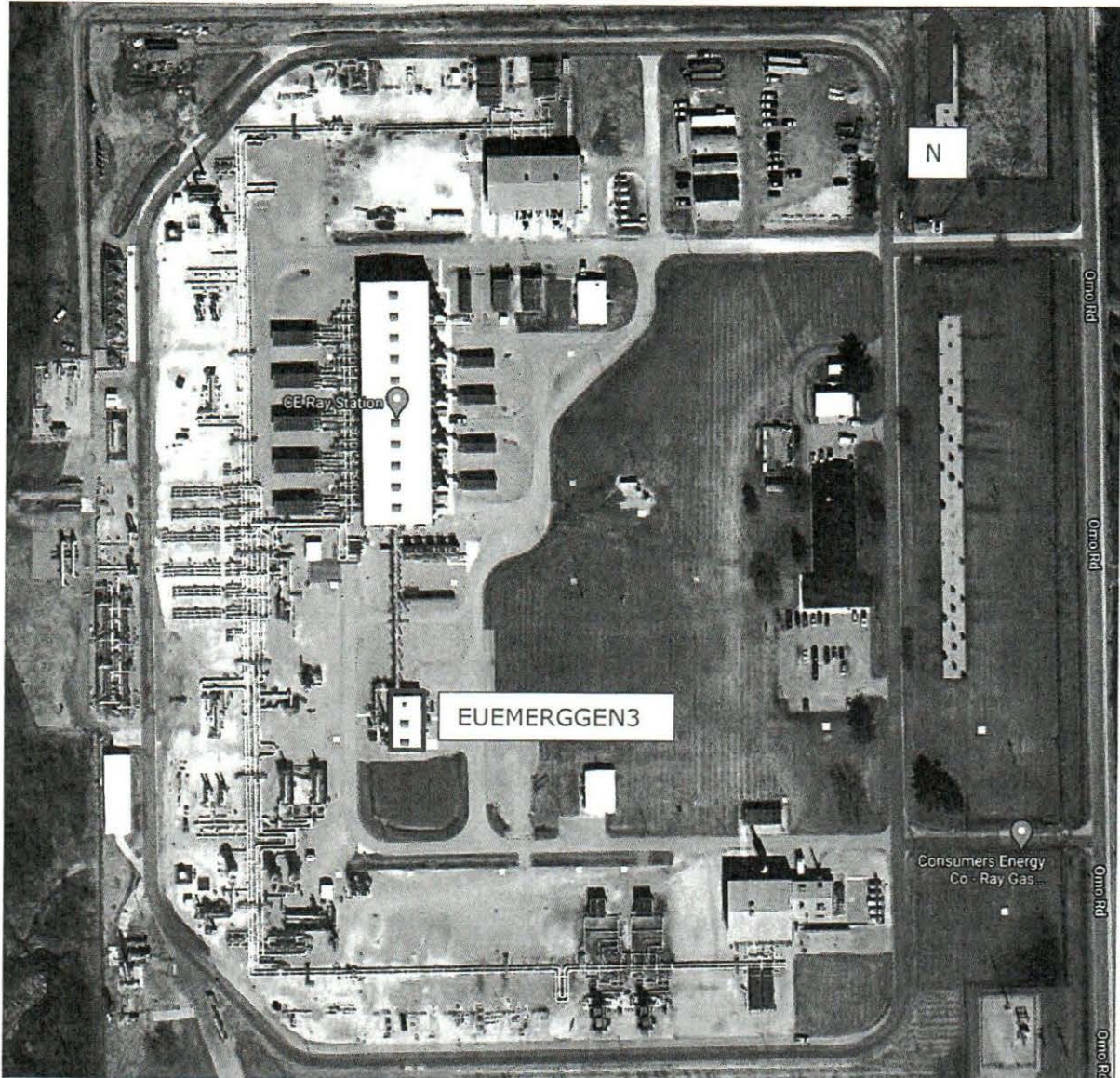
Detailed operating data recorded during testing are provided in Appendix C.

### 3.2 PROCESS FLOW

Located in northern Macomb County, the Ray Compressor Station is a natural gas transmission and storage facility. The site pumps natural gas into and out of underground storage reservoirs and maintains the pressure along the pipeline system. During normal seasonal weather patterns, natural gas is purchased for storage injection in April through October and withdrawn from storage reservoirs in November through March.

EUEMERGGEN3 maintains station electric power during a commercial power outage. The natural gas engine generator set is designed to start and supply power before equipment shutdowns to maintain station flow rate. Refer to Figure 3-2 for the Ray Compressor Station Site Map depicting the EUEMERGGEN3 location.

**Figure 3-2. Ray Compressor Station Site Map**



### **3.3 MATERIALS PROCESSED**

The fuel utilized in EUEMERGGEN3 is exclusively natural gas, as defined in 40 CFR 72.2. During testing, the natural gas combusted within the engine was comprised of approximately 93% methane and 7% ethane. The daily natural gas chromatograph analysis results are provided in Appendix C. The gas composition and Btu content were used to calculate site-specific F factors in accordance with United States Environmental Protection Agency (USEPA) Method 19 and used in emission rate calculations.

### **3.4 RATED CAPACITY**

EUEMERGGEN3 has a maximum power output of approximately 1,818 horsepower, and as equipped with the electric generator, a maximum electrical output of 1,318 kilowatts. The engine has a rated heat input of 12.8 million British thermal units per hour (mmBtu/hour).

The engine operating parameters were recorded and averaged for each test run. Refer to Appendix C for operating data recorded during testing.

### 3.5 PROCESS INSTRUMENTATION

The engine operating parameters were continuously monitored by a distributed control system for the Caterpillar engine, data acquisition systems, the Caterpillar Load Bank operator, and by Consumers Energy personnel during testing. Data were collected during each test for the following parameters: Refer to Appendix C for operating data.

- Total current (RMS Amps)
- Power (Kilowatts)
- Engine speed (rpm)
- Power factor
- Engine Torque (% max)
- Fuel flow (scfm)
- Phase A, B, C, and total current (amps)
- Electric potential (Volts)
- Unit hours

The horsepower of the engine was calculated based on the following:

$$\text{Engine Torque (\% max)} \times \text{Rated Engine Power at 100\% (1818 bhp)}$$

## 4.0 SAMPLING AND ANALYTICAL PROCEDURES

Consumers Energy RCTS tested for NO<sub>x</sub>, CO, VOC, and oxygen (O<sub>2</sub>) concentrations using the USEPA test methods presented in Table 4-1. The sampling and analytical procedures associated with each parameter are described in the following sections.

**Table 4-1  
Test Methods**

| Parameter                          | Method      | USEPA Title  |
|------------------------------------|-------------|--|
| Sample traverses                   | 1           | Sample and Velocity Traverses for Stationary Sources   |
| Oxygen                             | 3A          | Determination of Oxygen and Carbon Dioxide Concentrations in Emissions from Stationary Sources (Instrumental Analyzer Procedure) |
| Moisture content                   | 4 / ALT-008 | Determination of Moisture Content in Stack Gases   |
| Nitrogen oxides (NO <sub>x</sub> ) | 7E          | Determination of Nitrogen Oxides Emissions from Stationary Sources (Instrumental Analyzer Procedure)                             |
| Carbon monoxide (CO)               | 10          | Determination of Carbon Monoxide Emissions from Stationary Sources (Instrumental Analyzer Procedure)                             |
| Emission rates                     | 19          | Sulfur Dioxide Removal and Particulate, Sulfur Dioxide and Nitrogen Oxides from Electric Utility Steam Generators                |
| Volatile organic compounds         | 25A         | Measurement of Gaseous Organic Compound Emissions by Gas Chromatography  |

## 4.1 DESCRIPTION OF SAMPLING TRAIN AND FIELD PROCEDURES

The test matrix presented in Table 4-2 summarizes the sampling and analytical methods performed for the specified parameters during this test program.

**Table 4-2  
Test Matrix**

| Date (2023) | Run | Sample Type                                    | Start Time (EDT) | Stop Time (EDT) | Test Duration (min) | EPA Test Method | Comment                               |
|-------------|-----|--|------------------|-----------------|---------------------|-----------------|---------------------------------------|
| Sept. 7     | 1   | O <sub>2</sub><br>NO <sub>x</sub><br>CO<br>VOC | 09:00            | 09:59           | 60                  | 1<br>3A         | Three-point sample at exhaust stack   |
|             | 2   |  | 11:15            | 12:14           | 60                  | 4<br>7E<br>10   | Single-point sample at exhaust stack  |
|             | 3   |  | 13:45            | 14:44           | 60                  | 19<br>25A       | Single-point sample at exhaust stack. |

## 4.2 SAMPLE LOCATION AND TRAVERSE POINTS (USEPA METHOD 1)

The number and location of traverse points was evaluated according to the requirements in Table 2 of 40 CFR Part 60, Subpart JJJJ, and USEPA Method 1, *Sample and Velocity Traverses for Stationary Sources*. The sampling location for EUEMERGGEN3 is described as:

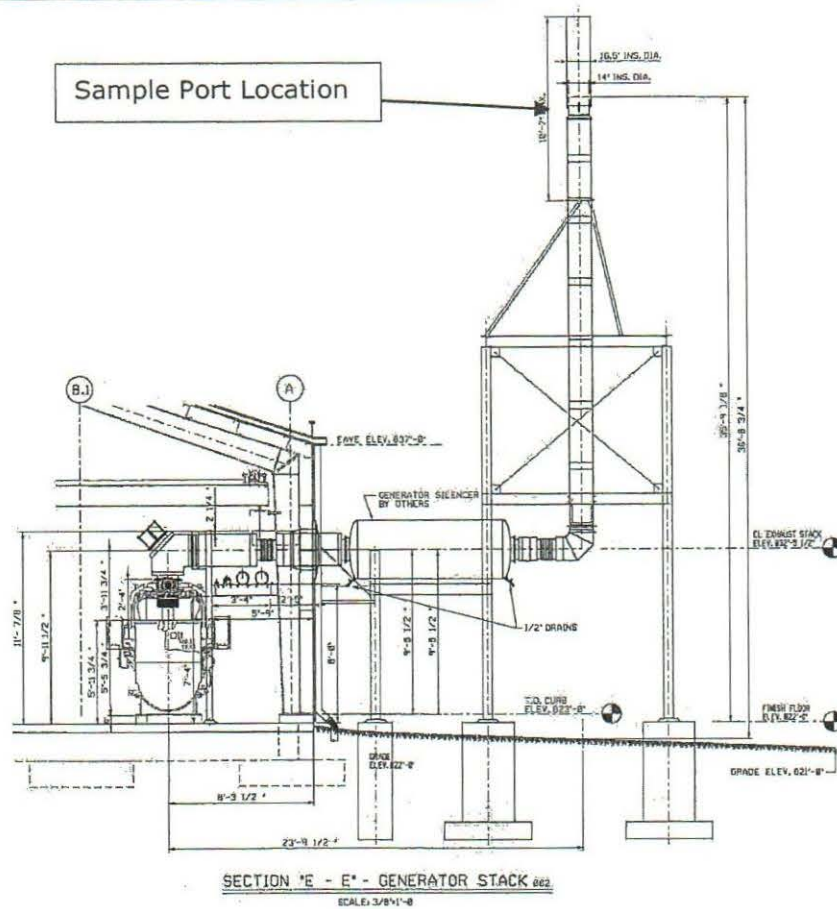
### Sample Port in 14-inch diameter duct:

- Approximately 24-feet or 20 duct diameters downstream of a flow disturbance where the engine exhaust makes a 90 degree turn, and
- Approximately 60-inches or 4 duct diameters upstream of the exit to atmosphere.

The sample port is 1-inch in diameter and extends approximately 3 inches beyond the stack wall. Because the duct is >12 inches in diameter and the sampling port location meets the two and one-half diameter criterion of Section 11.1.1 of Method 1 of 40 CFR Part 60, Appendix A-1, the exhaust duct was sampled at 3 traverse points located at 16.7, 50.0, and 83.3% of the measurement line ('3-point long line'). The exhaust flue gas was sampled from the three traverse points at approximately equal intervals during the test for Run 1.

A three traverse point stratification test was performed using parameter concentrations from Run 1 in accordance with USEPA Method 7E, §8.1.2. The individual point and mean parameter concentrations were calculated and the gas stream was considered unstratified; therefore, parameter concentrations were measured from a single point near the centroid of the stack for Runs 2 and 3.

**Figure 4-1. EUEMERGGEN3 Sampling Location**

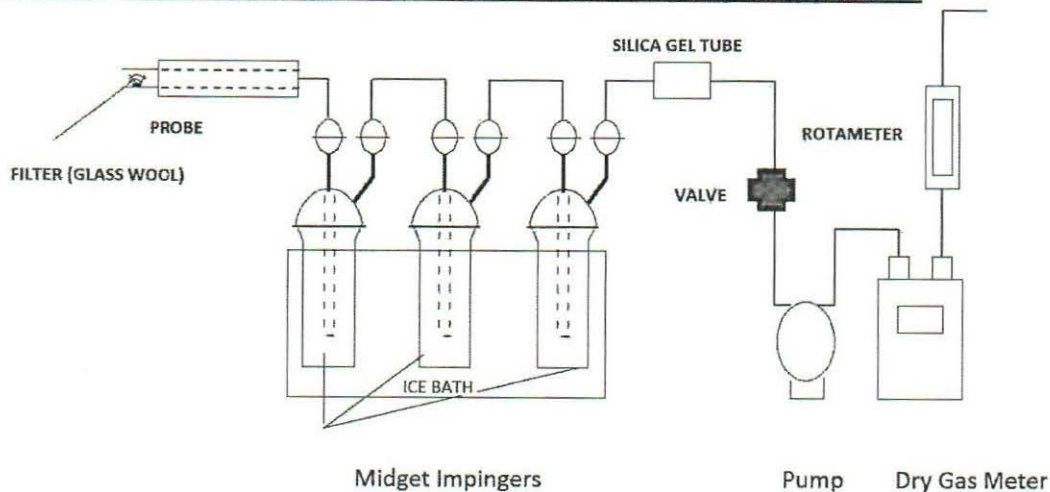


### 4.3 MOISTURE CONTENT (USEPA METHOD 4 / ALT-008)

Exhaust gas moisture content was determined in accordance with USEPA ALT-008, *Alternative Moisture Measurement Method Midget Impingers*, an alternative method for correcting pollutant concentration data to appropriate moisture conditions (e.g. pollutant and/or air flow data on a dry or wet basis) validated May 19, 1993 by the USEPA Emission Measurement Branch. The procedure is incorporated into Method 6A of 40 CFR Part 60 and is based on field validation tests described in *An Alternative Method for Stack Gas Moisture Determination* (Jon Stanley, Peter Westlin, 1978, USEPA Emissions Measurement Branch). The sample apparatus configuration follows the general guidelines contained in Figure 4-2 and § 8.2 of USEPA Method 4, *Determination of Moisture Content in Stack Gases*, and ALT-008 Figure 1 or 2.

The flue gas is withdrawn from the stack at a constant rate through a sample probe, Teflon tubing, four midget impingers, and a metering console with pump. The moisture is removed from the gas stream in the ice-bath chilled impingers and determined gravimetrically. The mass of condensate collected and the volume of flue gas sampled are used to calculate the moisture content. Refer to Figure 4-2 for a depiction of the Alternative Method 008 Moisture Sample Apparatus.

**Figure 4-2. Alternative Method 008 Moisture Sample Apparatus**



\*The silica gel tube depicted in the figure above was replaced with a midget impinger (bubbler) with a straight tube insert, as allowed in ALT-008, §1.

#### **4.4 O<sub>2</sub>, NO<sub>x</sub>, AND CO (USEPA METHODS 3A, 7E, AND 10)**

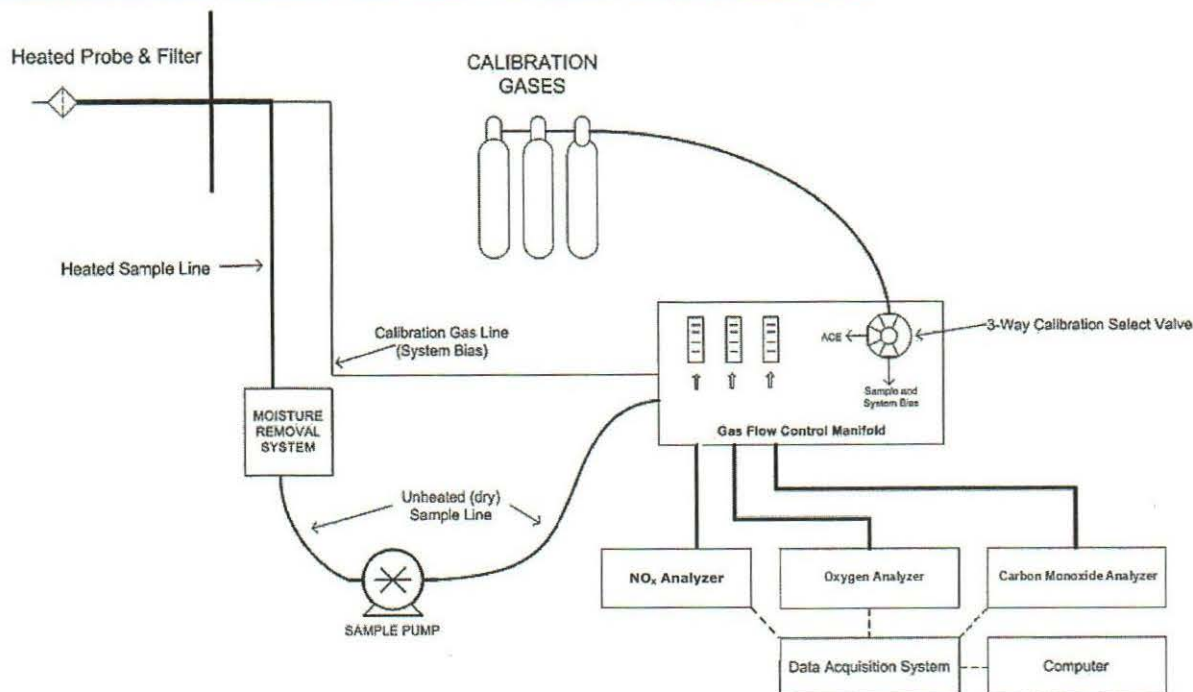
Oxygen, nitrogen oxides, and carbon monoxide concentrations were measured using the following sampling and analytical procedures:

- USEPA Method 3A, *Determination of Oxygen and Carbon Dioxide Concentrations in Emissions from Stationary Sources (Instrumental Analyzer Procedure)*,
- USEPA Method 7E, *Determination of Nitrogen Oxides Emissions from Stationary Sources (Instrumental Analyzer Procedure)*, and
- USEPA Method 10, *Determination of Carbon Monoxide Emissions from Stationary Sources (Instrumental Analyzer Procedure)*.

The sampling procedures of the methods are similar, except for the analyzers and analytical technique used to quantify the parameters of interest. The measured oxygen concentrations were used to adjust the pollutant concentrations to 15% O<sub>2</sub> and calculate pollutant emission rates.

Engine exhaust gas was extracted from the stack through a stainless-steel probe, heated Teflon® sample line, and through a gas conditioning system to remove water and dry the sample before entering a sample pump, flow control manifold, and gas analyzers. Figure 4-3 depicts a drawing of the Methods 3A, 7E, and 10 sampling system.

**Figure 4-3. USEPA Methods 3A, 7E, and 10 Sampling System**



Prior to sampling engine exhaust gas, the analyzers were calibrated by performing a calibration error test where zero-, mid-, and high-level calibration gases were introduced directly to the back of the analyzers. The calibration error check was performed to evaluate if the analyzers response was within  $\pm 2.0\%$  of the calibration gas span or high calibration gas concentration. An initial system-bias test was performed where the zero- and mid- or high- calibration gases were introduced at the sample probe to measure the ability of the system to respond accurately to within  $\pm 5.0\%$  of span.

A  $\text{NO}_2$  to  $\text{NO}$  conversion efficiency test was performed on the  $\text{NO}_x$  analyzer prior to beginning the test program to evaluate the ability of the instrument to convert  $\text{NO}_2$  to  $\text{NO}$  before analyzing for  $\text{NO}_x$ . The test verified the analyzer response as  $\text{NO}_x$  was  $\geq 90\%$  of the certified  $\text{NO}_2$  calibration gas concentration.

Upon successful completion of the calibration error and initial system bias tests, sample flow rate and component temperatures were verified, and the probe was inserted into the duct at the appropriate traverse point. After confirming the engine was operating at established conditions, the test run was initiated. Gas concentrations were recorded at 1-minute intervals throughout each 60-minute test run.

After the conclusion of each test run, a post-test system bias check was performed to evaluate analyzer bias and drift from the pre- and post-test system bias checks. The system-bias checks evaluated if the analyzers bias was within  $\pm 5.0\%$  of span and drift was within  $\pm 3.0\%$ . The analyzers responses were used to correct the measured gas concentrations for analyzer drift.

For the analyzer calibration error tests, bias tests and drift checks, these evaluations are also passed if the standard criteria are not achieved, but the absolute difference between the analyzer responses and calibration gas is less than or equal to 0.5 ppmv for  $\text{NO}_x$  and CO or 0.5% for  $\text{O}_2$ .

## 4.5 EMISSION RATES (USEPA METHOD 19)

USEPA Method 19, *Determination of Sulfur Dioxide Removal Efficiency and Particulate Matter, Sulfur Dioxide, and Nitrogen Oxide Emission Rates*, was used to calculate a fuel specific  $F_c$  factor and exhaust gas flowrate pursuant to guidance by USEPA to not use default published F factors for such Subpart JJJJ test events.

The natural gas processed by the Ray Compressor Station is the same gas used for firing EUEMERGEN3. The facility collects a daily sample of this gas and analyzes it via gas chromatography (GC) for hydrocarbons, non-hydrocarbons, heating value, and other parameters. The test day GC results were obtained to calculate  $F_w$ ,  $F_d$ , and  $F_c$  factors (ratios of combustion gas volumes to heat inputs) using USEPA Method 19 Equations 19-13 ( $F_d$ ), 19-14 ( $F_w$ ), and 19-15 ( $F_c$ ). The  $F_d$  factor was used to calculate the exhaust gas flow rate using Equation 19-1 presented in Figure 4-4, which was incorporated into 40 CFR Part 60 Subpart JJJJ Equations 1, 2, and 3 to calculate g/HP-hr emission rates.

### **Figure 4-4. USEPA Method 19 Exhaust Flow Rate Equation 19-1**

$$Q_s = F_d H \frac{20.9}{20.9 - O_2}$$

Where:

- $Q_s$  = stack flow rate (dscf/min)
- $F_d$  = fuel-specific oxygen-based F factor, dry basis, from Method 19 (dscf/mmBtu)
- $H$  = fuel heat input rate, (mmBtu/min), at the higher heating value (HHV) measured at engine fuel feed line, calculated as (fuel feed rate in ft<sup>3</sup>/min) x (fuel heat content in mmBtu/ft<sup>3</sup>)
- $O_2$  = stack oxygen concentration, dry basis (%)

### **Figure 4-5. 40 CFR Part 60 Subpart JJJJ Equation 1, 2, 3**

$$ER = \frac{C_d \times K \times Q \times T}{HP - hr}$$

Where:

- ER = Emission rate of pollutant in g/HP-hr
- $C_d$  = Measured pollutant concentration in parts per million by volume, dry basis (ppmvd)
- K = Conversion constant for ppm pollutant to grams per standard cubic meter at 20°C:
  - $KNO_x = 1.912 \times 10^{-3}$  (Equation 1)
  - $KCO = 1.164 \times 10^{-3}$  (Equation 2)
  - $KVOC = 1.833 \times 10^{-3}$  (Equation 3)
- Q = Stack gas volumetric flow rate, in cubic meter per hour, dry basis
- T = Time of test run, in hours

## 4.6 VOLATILE ORGANIC COMPOUNDS (USEPA METHOD 25A)

VOC concentrations were measured from the engine using a Thermo Model 55i Direct Methane and Non-methane Analyzer following the guidelines of USEPA Method 25A, *Determination of Total Gaseous Organic Concentration Using a Flame Ionization Analyzer (FIA)*. The instrument uses a flame ionization detector (FID) to measure the exhaust gas total hydrocarbon concentration in conjunction with a gas chromatography column that separates methane from other organic compounds.

The components of the extractive sample interface apparatus are constructed of stainless steel and Teflon. Flue gas was collected from the stack via a sample probe and heated



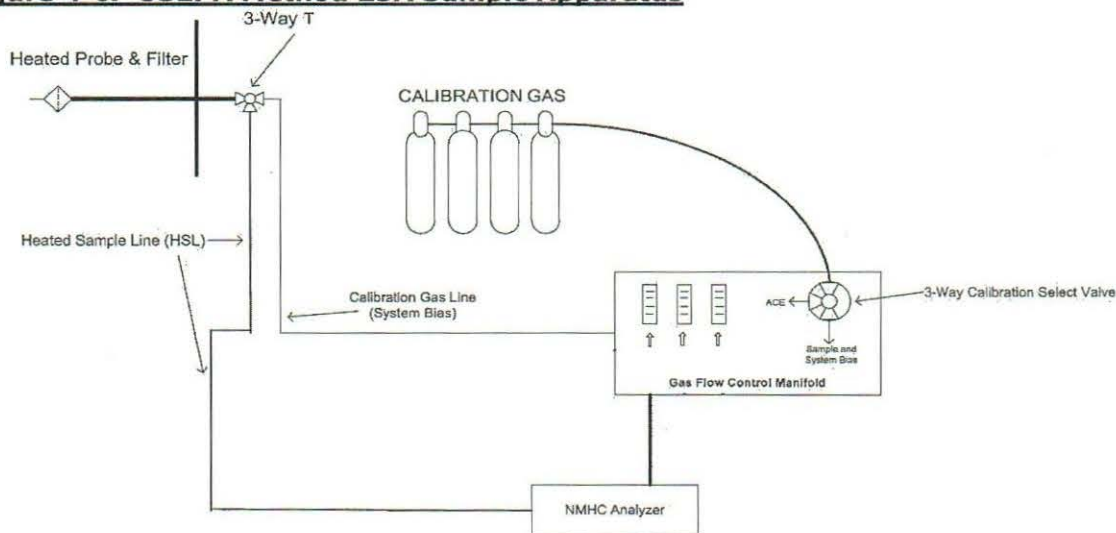
sample line and into the analyzer, which communicates with the data acquisition handling system (DAHS) via output signal cables. The analyzer uses a rotary valve and gas chromatograph column to separate methane from hydrocarbons in the sample and quantifies these components using a flame ionization detector.

Sample gas is injected into the column and due to methane's low molecular weight and high volatility moves through the column more quickly than other organic compounds that may be present and quantified by the FID. The column is then flushed with inert carrier gas and the remaining non-methane organic compounds are analyzed in the FID. This analytical technique allows separate measurements for methane and non-methane organic compounds via the use of a single FID. Refer to Figure 4-6 for a drawing of the USEPA Method 25A sampling apparatus.

The field VOC instrument was calibrated with a zero air and three propane and methane in air calibration gases following USEPA Method 25A procedures at the zero level, low (25 to 35 percent of calibration span), mid (45 to 55 percent of calibration span) and high (equivalent to 80 to 90 percent of instrument span). Since the field VOC instrument measures on a wet basis, exhaust gas moisture content was used to convert the wet VOC concentrations to a dry basis and calculate VOC mass emission rates. The ALT-008 moisture content results were used to convert the VOC concentration to a dry basis and calculate emission rates.

Please note that 40 CFR Part 60, Subpart JJJJ refers to the definition of VOC found in 40 CFR, Part 51 and does not include methane or ethane. Specifically, §51.100(s)(1) defines VOC as *any compound of carbon...other than the following, which have been determined to have negligible photochemical reactivity: methane, ethane...* The Thermo 55i analyzer used measures exhaust gas ethane as part of the NMOC measurement. Therefore, the NMOC concentrations measured may reflect a positive NMOC bias.

**Figure 4-6. USEPA Method 25A Sample Apparatus**



## **5.0 TEST RESULTS AND DISCUSSION**

The test program was conducted September 7, 2023 to satisfy performance testing requirements and evaluate compliance with 40 CFR Part 60, Subpart JJJJ, *Standards of Performance for Stationary Spark Ignition Internal Combustion Engines*, (aka NSPS SI ICE), and MI-ROP-N5792-2018.

Note that the emission rates in this report use calculated fuel flow rates logged by the Caterpillar, Inc. engine generator load bank., rather than as measured by the facility. While a calculated flow rate approach is not necessarily specified by 40 CFR Part 60, Subpart JJJJ, the fuel flow rate used is representative of the maximum, worst-case emission rate scenario.

### **5.1 TABULATION OF RESULTS**

The results of the EUEMERGGEN3 testing indicate the NO<sub>x</sub>, CO, and VOC emissions are compliant with applicable emissions limits as summarized in Table 2-1. Appendix Table 1 contains detailed tabulation of results, process operating conditions, and exhaust gas conditions for the engine.

### **5.2 SIGNIFICANCE OF RESULTS**

The results of the testing indicate compliance with the applicable emission limits.

### **5.3 VARIATIONS FROM SAMPLING OR OPERATING CONDITIONS**

No variations from sampling or operating conditions was encountered during testing.

### **5.4 PROCESS OR CONTROL EQUIPMENT UPSET CONDITIONS**

There were no process or control equipment upset conditions encountered during this test program. The engine was connected to a load bank and operating at the highest achievable load (93% of engine torque, 93% of peak engine horsepower) during testing.

### **5.5 AIR POLLUTION CONTROL DEVICE MAINTENANCE**

No major pollution control device maintenance was performed during the three-month period prior to the test event.

### **5.6 RE-TEST DISCUSSION**

Based on the results of this test program, a re-test is not required. Subsequent emissions testing on the engine will be performed:

- Every 8,760 engine-operating hours or 3 years (2026), whichever is first, thereafter to evaluate compliance with NO<sub>x</sub>, CO, and VOC emission limits in 40 CFR Part 60, Subpart JJJJ and the ROP. The service meter indicated 353 hours of operation after the conclusion of the compliance test.

### **5.7 RESULTS OF AUDIT SAMPLES**

Audit samples for the reference methods utilized during this test program are not available from USEPA Stationary Source Audit Sample Program providers. The USEPA reference methods performed state reliable results are obtained by persons equipped with a thorough knowledge of the techniques associated with each method. Factors with the potential to cause measurement errors are minimized by implementing quality control (QC) and

assurance (QA) programs into the applicable components of field-testing. QA/QC components were included in this test program.

Table 5-1 summarizes the primary field quality assurance and quality control activities that were performed. Refer to Appendix D for supporting documentation.

**Table 5-1  
QA/QC Procedures**

| QA/QC Activity                                 | Purpose  | Procedure  | Frequency              | Acceptance Criteria  |
|--|--|--|------------------------|--|
| M1: Sampling Location                          | Evaluates if the sampling location is suitable for sampling                    | Measure distance from ports to downstream and upstream flow disturbances                 | Pre-test               | ≥2 diameters downstream;<br>≥0.5 diameter upstream.  |
| M1: Duct diameter/ dimensions                  | Verifies area of stack is accurately measured                                  | Review as-built drawings and field measurement   | Pre-test               | Field measurement agreement with as-built drawings   |
| M3A, M7E, M10, M25A: Calibration gas standards | Ensures accurate calibration standards   | Traceability protocol of calibration gases   | Pre-test               | Calibration gas uncertainty ≤2.0%  |
| M3A, M7E, M10: Calibration Error               | Evaluates operation of analyzers   | Calibration gases introduced directly into analyzers                                     | Pre-test               | ±2.0% of the calibration span or 0.5 ppmv or 0.5% CO <sub>2</sub> absolute difference  |
| M3A, M7E, M10: System Bias and Analyzer Drift  | Evaluates analyzer and sample system integrity and accuracy over test duration | Calibration gases introduced at sample probe tip, heated sample line, and into analyzers | Pre-test and Post-test | ±5.0% of the analyzer calibration span for bias and ±3.0% of analyzer calibration span for drift or ≤ 0.5 ppmv or 0.5% CO <sub>2</sub> absolute difference |
| M7E: NO <sub>2</sub> -NO converter efficiency  | Evaluates operation of NO <sub>2</sub> -NO converter                           | NO <sub>2</sub> calibration gas introduced directly into analyzer                        | Pre-test or Post-test  | NO <sub>x</sub> response ≥90% of certified NO <sub>2</sub> calibration gas introduced  |
| M25A: Calibration Error                        | Evaluates operation of analyzer and sample system                              | Calibration gases introduced through sample system                                       | Pre-test               | ±5.0% of the calibration gas value   |
| M25A: Zero and Calibration Drift               | Evaluates analyzer and sample system integrity and accuracy over test duration | Calibration gases introduced through sample system                                       | Pre-test and Post-test | ±3.0% of the analyzer calibration span   |

## 5.8 CALIBRATION SHEETS

Calibration sheets, including gas protocol sheets and analyzer quality control and assurance checks are presented in Appendix D.

## 5.9 SAMPLE CALCULATIONS

Sample calculations and formulas used to compute emissions data are presented in Appendix A.

## **5.10 FIELD DATA SHEETS**

Field data sheets are presented in Appendix B.

## **5.11 LABORATORY QUALITY ASSURANCE / QUALITY CONTROL PROCEDURES**

The method specific quality assurance and quality control procedures in each method employed during this test program were followed, without deviation.

## **5.12 QA/QC BLANKS**

The Method 3A, 7E, 10, and 25A calibration gases described in Table 5-1 above were the QA/QC media employed during the test event. QA/QC data are shown in Appendix D.