

MICHIGAN DEPARTMENT OF ENVIRONMENTAL QUALITY

INTEROFFICE COMMUNICATION

February 14, 2003

TO: File for 1,2,2,6,6-Pentamethyl-4-Piperidinol (CAS #2403-89-6)

FROM: Michael Depa, Air Unit, Environmental Science and Services Division (ESSD)

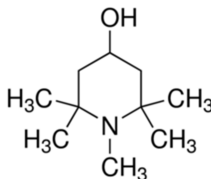
SUBJECT: Screening Level Determination

The initial threshold screening level (ITSL) for 1,2,2,6,6-pentamethyl-4-piperidinol is 0.1 $\mu\text{g}/\text{m}^3$ based on annual averaging time.

The following references or databases were searched to identify data to determine the screening level: U.S. Environmental Protection Agency (EPA) Integrated Risk Information System, Registry for Toxic Effects of Chemical Substances, American Conference of Governmental and Industrial Hygienists Threshold Limit Values, National Institute for Occupational Safety and Health Pocket Guide to Hazardous Chemicals, Environmental Protection Bureau Library, International Agency for Research on Cancer Monographs, Chemical Abstract Service (CAS) - Online (1967- November 2002), National Library of Medicine, Health Effects Assessment Summary Tables, and National Toxicology Program Status Report.

The EPA has not established a reference concentration or reference dose for 1,2,2,6,6-pentamethyl-4-piperidinol. The molecular weight of 1,2,2,6,6-pentamethyl-4-piperidinol is 171.28g. The molecular structure of 1,2,2,6,6-pentamethyl-4-piperidinol is shown in Figure 1.

Figure 1



After a thorough search of the literature, it was found that there were no toxicity studies available for review. Therefore, based on Rule 232(1)(i), the ITSL for 1,2,2,6,6-pentamethyl-4-piperidinol is 0.1 $\mu\text{g}/\text{m}^3$ (annual averaging time).

md:dp
cc: Cathy Simon, ESSD