

## Michigan Department of Environmental Quality

### Interoffice Communication

TO: File for Alpha-Terpineol (CAS # 10482-56-1)

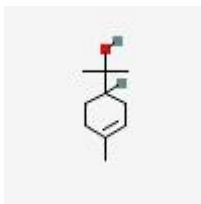
FROM: Doreen Lehner, Toxics Unit, Air Quality Division

SUBJECT: Screening Level for Alpha-Terpineol (CAS #10482-56-1)

DATE: May 10, 2011

The initial threshold screening level (ITSL) for alpha-terpineol (CAS #10482-56-1) is 0.1  $\mu\text{g}/\text{m}^3$  annual averaging time.

Alpha-terpineol (CAS #10482-56-1) is also known as 2-(4-methyl-1-cyclohex-3-enyl)propan-2-ol, p-menth-1-en-8-ol,  $\alpha,\alpha,4$ -trimethylcyclohex-3-ene-1-methanol, and terpene alcohol. It is a colorless, viscous liquid to solid with a molecular weight of 154.25. Alpha-terpineol is used in insecticides, microbicides, and fungicides; in small amounts as flavoring agents; and fragrance agents in perfumes and soaps.



A literature review was conducted to determine an initial threshold screening level (ITSL) for alpha-terpineol. The following references and databases were searched to derive the above screening level: EPBCCD, United States Environmental Protection Agency (US EPA) Integrated Risk Information System (IRIS), National Institute for Occupational Safety and Health (NIOSH), American Conference of Governmental Industrial Hygienists (ACGIH) Threshold Limit Values and Biological Exposure Indices (TLV/BEI) 2010 guide, National Toxicology Program (NTP) Study Database, International Agency for Research on Cancer (IARC), Acute Database, Chemical Abstract Service (CAS) Online (searched 5/4/11), National Library of Medicine (NLM)-online, EPA Aggregated Computational Toxicology Resource (ACToR) Database, US EPA TSCATS database, and Hazardous Substances Data Bank (HSDB).

RfC or RfD values were unavailable. There is no NIOSH recommended exposure limit data available for this compound or a threshold limit value from ACGIH. No 7-day inhalation studies that would yield a LOAEL or NOAEL and no acute inhalation data where an  $\text{LC}_{50}$  can be derived. Based on Rule 232(1)(i) the ITSL is set at the default of 0.1  $\mu\text{g}/\text{m}^3$ . According to Rule 232(2)(c), the averaging time is annual.

Based on the above data, the initial threshold screening level (ITSL) for alpha-terpineol (CAS #10482-56-1) is 0.1  $\mu\text{g}/\text{m}^3$  annual averaging time.

#### References:

Act 451 of 1994, Natural Resources and Environmental Protection Act and Air Pollution Control Rules, Michigan Department of Environmental Quality.

DL:lh